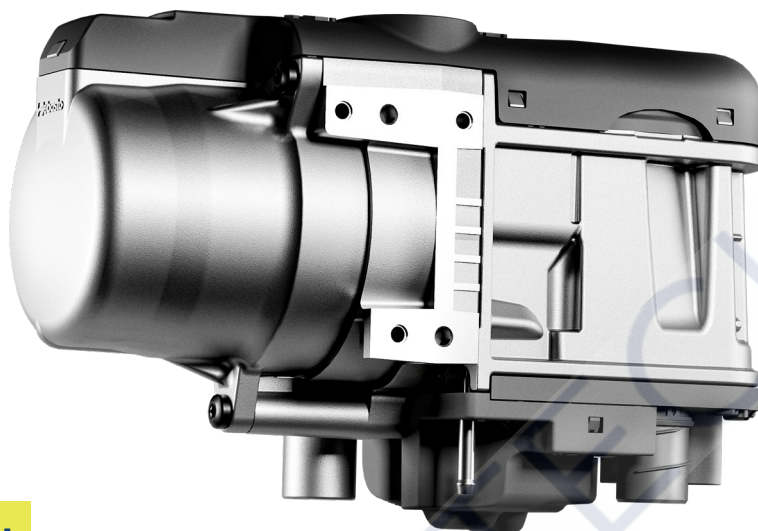


# Thermo Top Pro 50

Next generation coolant heater for professional applications



## New with LIN

The Thermo Top Pro 50 heater is the advanced successor to the Thermo Pro 50 Eco, specifically designed for lightweight trucks and small to medium-sized commercial vehicles. It retains the compact dimensions and lightweight design of its predecessor while introducing an enhanced HDSCS connector, making the heater more robust and simplifying installation. Thermo Top Pro 50 now features both LIN-Bus and analog signal input, offering maximum flexibility for seamless vehicle integration.

Enhanced components, such as a new blower module and coolant fluid pump, significantly boost the heater's efficiency. With additional time-tested features, such as an automatic altitude adjustment, Arctic Start and continuous heating control, extreme environmental conditions can be managed easily.

By efficient preheating of the engine, the Thermo Top Pro 50 makes the vehicle more ready for use, especially in harsh environmental conditions. At the same time, it contributes to more economical, environmentally friendly and wear-reduced operation.

### Key benefits at a glance:

- Engine-independent water heater with 2.5 to 5.0 kW of heating power
- High product quality and long service life of the device
- Especially economical and lower in emissions thanks to efficient heating power control
- Standard altitude adjustment is now up to 4000 m
- Available for initial installation and retrofitting
- New blower module with improved design and extended capabilities
- New coolant fluid pump UP500 for a vastly improved performance and increased efficiency
- Redesigned ECU and HDSCS connector for easier installation and LIN-Bus communication



Truck


Light  
vehicles


Off-Highway


Specialty  
vehicles

## Technical specifications

	Thermo Top Pro 50
ECE approval number ECE R122 (heating)	E1 00 0471
ECE approval number ECE R10 (EMC)	E1 06 7609
Heating capacity, part load / full load (kW)	2.5 / 5.0
Fuel consumption, part load / full load (l / h)	0.3 / 0.6
Nominal voltage (V)	24
Nominal power consumption without coolant pump, part load / full load (W)	28 - 46
Fuels	Diesel DIN EN 590; Diesel B20-B30 DIN EN 16709;
Operating temperature range (°C)	-40 to +80
Communication	LIN 2.2
Dimensions L x W x H (mm)	218 x 91 x 147
Weight (kg)	2.2
Cyber security	ISO/SAE 21434
Permissible high altitude level above sea level (m)	up to 4.000
	Coolant pump UP500
Nominal power consumption (W)	12.0
Volume flow against 0.31 bar (l/h)	500
Dimensions L x W (mm)	89 x 53
Weight (kg)	0.25

### Scope of delivery:

- Standard Thermo Top Pro 50
- Coolant pump UP500
- Fuel pump DP42
- Product documentation basic

### Installation kit universal:

- Standard electrical kit with wiring harness
- Exhaust silencer with standard pipes
- Intake silencer with pipe
- Set-off fuel line with mounting parts
- Water hoses and connectors

### Vehicle & market specific kits (alternative to standard kit):

- Individual vehicle specific application

### Recommended control elements

#### Rocker Switch:

- Operation indicator and fault display by blink code
- Cover panel dimensions (L x W): 23 x 23 mm (drilling hole 20 mm, necessary)



### ThermoConnect:

- Convenient control of connected Webasto parking heater
- Info such as status of the heater, interior temperature and vehicle position
- Utilize GPS position of the vehicle
- Heating or ventilation mode



### MultiControl:

- Intuitive user interface
- 7-day timer function
- Ventilation function
- Quick and easy dashboard installation
- High altitude functionality



### UniControl:

- Mounted via universal DIN slot
- Quick and intuitive operation
- Individual operating time between 10 - 120 minutes or continuous heating
- Instrument lighting & Ignition plus
- Suitable for use in vehicles for the transport of dangerous goods (ADR)



Contact details