

EASYFIX INSTALLATION INSTRUCTIONS

Fuel removal kit for cars

1 Scope of supply

Fuel removal kit: 22.1000.20.4500

Includes:

- Tank connection
- Drill bit for plastic
- Installation instructions

2 Intended use

- The fuel remover is used to remove fuel from the fuel tank of a car with the help of a riser, which is installed in the tank fitting.

i Note

- Suitable for plastic tank fittings
- Wall thickness: 2.8 mm – 3.5 mm
- A torque wrench is required.

! DANGER!

Risk of explosion and fire!

- Avoid fire, smoking and naked flames at the fuelling facility. Observe the general accident prevention regulations and the relevant workshop and operating safety instructions.

! Caution!

Risk of chemical burns and poisoning!

- Avoid any contact of petrol or diesel with the eyes, skin and clothing.

3 Assembly

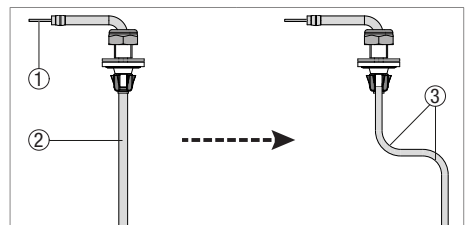
The fuel remover is mounted without dismantling the tank fitting.

i Note

- Mounting temperature $\geq 0\text{ }^{\circ}\text{C}$
- Remove the transport safety part between the O-ring and the tooth ring.
- The complete assembly must be free from oil and dirt before installation.
- Do not use lubricants during the assembly work.
- Do not move the fuel extractor after installation (do not twist it, etc.).

3.1 Preparation for the assembly

- Cut the riser to length according to the vehicle-specific installation recommendation or by measurement, deburr and if necessary, bend carefully with the plastic core: max. 2 bends, each with min. 10 mm bending radius!

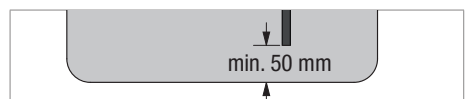


1 Plastic core
2 Riser

3 Bends: max. 2, min. radius 10 mm

i Note

Minimum distance from the end of the riser to the bottom of the tank: approx. 50 mm



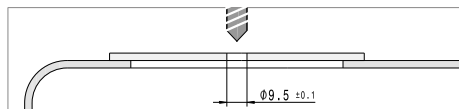
EN

3.2 Mounting the tank connection

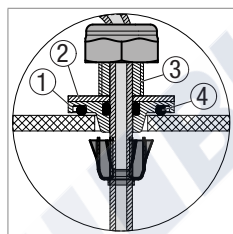
- Pull the plastic core out of the riser.
- Use the enclosed drill bit to drill a hole ($\varnothing 9.5$ mm) in a suitable place in the tank fitting.

i Note

- Max. drill speed: 500 revolutions/min.
- Do not interrupt the drilling process and do not switch off the drill until after the drill bit has been pulled out of the drillhole; this prevents chips from falling into the fuel tank.
- Redrilling or deburring the edges is not allowed.

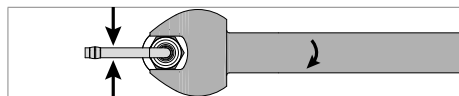


- Directly after drilling, insert the tank connection carefully into the hole and press in.
- The flange (1) and washer (2) must be positioned at the top on the threaded bush (3). Make sure that the O-ring (4) is positioned correctly.



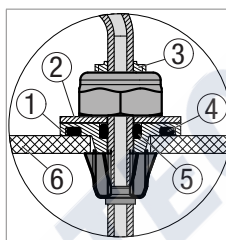
- 1 Flange
- 2 Plain washer
- 3 Threaded bush
- 4 O-ring

- Align the tank connection on the riser to the correct position.
- Fix the riser and tighten the nut M8 using an open-ended spanner (A/F size 13) until it stops. Tightening torque: 2.5 ± 0.2 Nm



i Note

- When tightening the nut the riser is moved upwards. Due to the pressure, the O-rings form a fuel-tight seal on the top of the tank fitting.
- The end position is reached when a thread is exposed above the nut and the flange (1) rests against the tank fitting (6) without a gap.

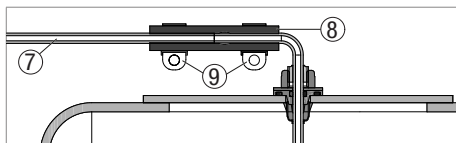


- 1 Flange
- 2 Plain washer
- 3 Threaded bush
- 4 O-ring
- 5 O-ring
- 6 Tank fitting

3.3 EasyFix connection

The universal installation kit includes all parts required for connection of the EasyFix fuel remover up to the metering pump or up to the heater with integrated metering pump:

- At the intake connection of the tank extractor, connect the fuel pipe (7) $\varnothing 4 \times 1$ mm to the fuel hose (8) $\varnothing 3.5 \times 3 \times 50$ mm and secure with 2 hose clips (9) $\varnothing 9$ mm.
- Lay the fuel pipe 4×1 mm from the tank connection to the metering pump or to the heater, connect to the connection hoses and fix using hose clips.



i Note

For fuel pipe laying installation steps see technical description of the heater.