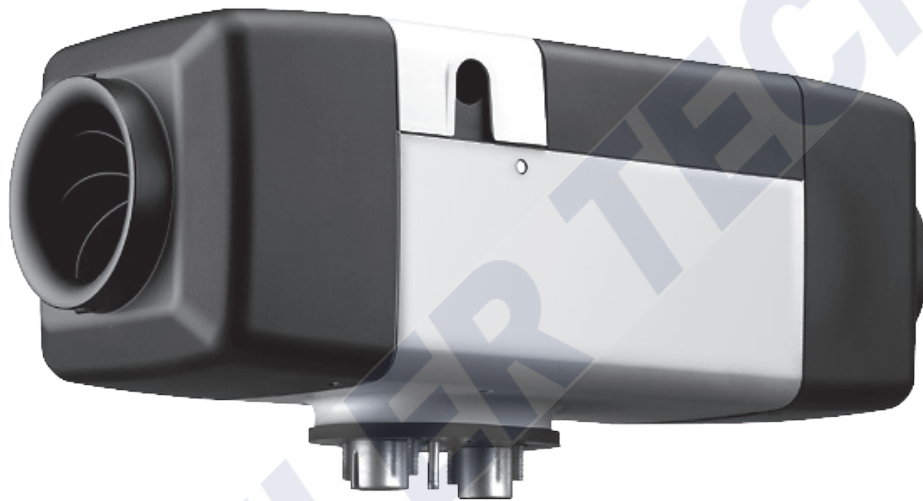


## Air Top Evo 55

Evolution with more power and versatility



The new Air Top Evo model offers greater comfort, safety and heating capacity for large commercial vehicles. Air heating ensures quick and efficient heating of cabins and cargo spaces. Energy consumption and noise are significantly reduced by the new control system. An automatic altitude compensation system is standard. Quick and easy installation makes the Air Top Evo an economical retrofit solution.

If required, two units can be combined in a modular fashion to allow for heating larger cargo spaces.

### Air Heater Features:

- 13,650/18,800 BTU/h (4.0/5.5 kW) heating capacity
- Low energy consumption and exceptionally quiet operation
- A wide range of safety and comfort functions
- High heat output in a compact design
- Proven quality and reliable performance
- Automatic altitude compensation as standard
- Continuous heating capacity

Technical Specifications

	Air Top Evo 40		Air Top Evo 55			
	Diesel, Biodiesel		Gasoline	Diesel, Biodiesel		Gasoline
Fuels	Diesel, Biodiesel		Gasoline	Diesel, Biodiesel		Gasoline
Nominal voltage	12 V	24 V	12 V	12 V	24 V	12 V
Heating capacity, control range/boost	5,100 – 12,000 / 13,650 BTU/h (1.5 – 3.5 / 4.0* kW)		5,800 – 12,000 / 13,650 BTU/h (1.7 – 3.5 / 4.0* kW)	5,100 – 17,000 / 18,800 BTU/h (1.5 – 5.0 / 5.5** kW)		5,800 – 17,000 / 18,800 BTU/h (1.7 – 5.0 / 5.5** kW)
Fuel consumption, control range/boost	0.05 – 0.11 / 0.13 gal/h (0.18 – 0.43 / 0.49 l/h)		0.07 – 0.14 / 0.15 gal/h (0.25 – 0.51 / 0.58 l/h)	0.05 – 0.16 / 0.18 gal/h (0.18 – 0.61 / 0.67 l/h)		0.07 – 0.19 / 0.21 gal/h (0.25 – 0.73 / 0.80 l/h)
Rated power consumption, control range/boost @ 12 V	1.25 – 3.3 / 4.58 Amps (15 – 40 / 55 W)			1.25 – 7.9 / 10.8 Amps (15 – 95 / 130 W)		
Operating temperature range	–40 to +104 °F (–40 to +40 °C)			–40 to +104 °F (–40 to +40 °C)		
Heating air volume flow against 0.5 mbar, control range/boost	77.7 / 82.4 cfm (132 / 140 m³/h)			117 / 129.5 cfm (200 / 220 m³/h)		
Dimensions (L x W x H)	16.7 x 5.8 x 6.4 in (423 x 148 x 162 mm)			16.7 x 5.8 x 6.4 in (423 x 148 x 162 mm)		
Weight	13 lbs (5.9 kg)			13 lbs (5.9 kg)		
Automatic altitude compensation	7,218 ft (2,200 m)			7,218 ft (2,200 m)		
ECE approval number ECE R122 (heating)	E1 00 0385			E1 00 0386		
ECE approval number ECE R10 (EMC)	E1 04 5529			E1 04 5529		

\*Increased heat output ("Boost") possible with Multi Comfort MC 04 control element (max. 6 hours)  
 \*\*Increased heat output ("Boost") possible with Multi Comfort MC 04 control element (max. 30 min.)

Available Air Heater Kits:

- Air Top 40 Evo Diesel Kit (12V) - Part Number 5011169A
- Air Top 40 Evo Diesel Sleeper Kit (12V) - Part Number 5011170A
- Air Top 40 Evo Diesel Interior Cargo Kit (12V) - Part Number 5011171A
- Air Top 40 Evo Diesel Exterior Cargo Kit (12V) - Part Number 5011172A
- Air Top 40 Evo Gasoline Interior Cargo Kit (12V) - Part Number 5011173A
- Air Top 40 Evo Diesel D Sleeper Kit (24V) - Part Number 5011174A
- Air Top 40 Evo Diesel Interior Cargo Kit (24V) - Part Number 5011175A
- Air Top 40 Evo Diesel Exterior Cargo Kit (24V) - Part Number 5011176A

- Air Top 55 Evo Diesel Kit (12V) - Part Number 5011177A
- Air Top 55 Evo Diesel Interior Cargo Kit (12V) - Part Number 5011178A
- Air Top 55 Evo Diesel Exterior Cargo Kit (12V) - Part Number 5011179A
- Air Top 55 Evo Gasoline Interior Cargo Kit (12V) - Part Number 5011180A
- Air Top 55 Evo Gasoline Kit (12V) - Part Number 5011181A

Kit Components:

- Heater
  - Fuel Pump
  - Warm Air Vent Screen\*
  - Base Seal
  - Heater Wire Harness
  - Fuel Pump Harness
  - Fuel Line
  - Fuel Standpipe
  - Exhaust Tubing
  - Flexible Stainless Steel Exhaust pipe
  - Combustion Air Tubing
  - Flexible Ducting
  - Air Outlets
  - Operation/Installation Manual
  - 2 Year/2000 Hour Limited Warranty
- \*Included in Cargo Kits only

Control Options

Standard Rheostat Controller:

- Part Number 5010068A
- Basic functions



Evo Multi-Functional Control MC04 (optional):

- Part Number 1322720A
- Boost Mode
  - Vent-Only Mode
  - Eco Mode



SmarTemp Control 2.0 (optional):

- Part Number 5010624B
- Adaptor Harness - Part Number 5010613B
- Programmable heater start time
  - Ergonomical design
  - Large backlit LCD screen
  - Ambient temperature display

