

Webasto Air Top 2000 ST Air Heater

Workshop manual

Air Top 2000 ST

Type AT 2000 ST B (petrol)

Type AT 2000 ST D (diesel)

Table of contents

1	Introduction	
1.1	Contents and purpose	101
1.1.1	Using the air heaters	101
1.2	Meaning of signal words	101
1.3	Additional documentation to be used.....	101
1.4	Statutory regulations and safety instructions	101
1.4.1	Regulations for installation in the vehicle	101
1.4.2	General safety information	102
1.5	Suggestions for improvements and modifications	104
2	General description	
2.1	Drive unit.....	201
2.2	Heat exchanger	202
2.3	Burner insert with burner pipe.....	202
2.4	Control unit	202
2.5	Flame sensor	202
2.6	Glow plug.....	203
2.7	Overheating sensor	203
2.8	Metering pump.....	203
3	Function description	
3.1	Control element	301
3.2	Switch on	301
3.3	Heating mode	301
3.4	Control mode	301
3.5	Control pause	302
3.6	Switch off	302
3.7	Heater functions when installed in ADR vehicles	302
3.8	Fault lock-out	302
3.8.1	Error monitor.....	302
3.8.2	Reset a fault lock-out.....	303
4	Technical data	401

5 Troubleshooting

5.1	General	501
5.2	General error symptoms	501
5.3	Error symptoms during function	502
5.4	Error code output in display of combination or standard timer	503

6 Function tests

6.1	General	601
6.2	Settings	601
6.2.1	Setting the CO content	601
6.3	Testing individual components	601
6.3.1	Resistance test on the glow plug	601
6.3.2	Resistance test on the flame sensor	601
6.3.3	Resistance test on the overheating sensor	602

7 Circuit diagrams

7.1	General	701
-----	---------------	-----

8 Servicing work

8.1	General	801
8.2	Work on the heater	801
8.3	Work on the vehicle	801
8.4	Heater trial	801
8.5	Servicing work	801
8.6	Visual inspections and installation instructions	801
8.6.1	Hot air system	801
8.6.2	Fuel supply	802
8.6.3	Metering pump	804
8.6.4	Fuel filter	804
8.6.5	Combustion air supply	805
8.6.6	Exhaust pipe	805
8.6.7	Combustion air intake and exhaust pipes	805
8.6.8	Electrical connections	806
8.7	Removal and installation	808
8.7.1	Heater, removal and installation	808
8.8	Start-up	808

9	Repair	
9.1	General	901
9.1.1	Work on stripped-down components	901
9.1.2	Carrying out modifications	901
9.2	Dismantling and assembling	902
9.2.1	Remove the casing parts	902
9.2.2	Fit the casing parts	902
9.2.3	Change the control unit	904
9.2.4	Change the overheating sensor	904
9.2.5	Change the combustion air fan	905
9.2.6	Change the flame sensor (only petrol heater)	905
9.2.7	Change the glow plug	907
9.2.8	Change the burner insert, combustion pipe and the heat exchanger	909
10	Packaging/Storage/Shipping	
10.1	General	1001

List of illustrations

501	General error symptoms	501
502	Error symptoms during function	502
503	Troubleshooting	503
701	Plug assignment	701
702	System circuit diagram 12V/24V with control element and vehicle blower	702
703	System circuit diagram 12V/24V with combination timer and vehicle blower	703
704	System circuit diagram 12V/24V with combination timer and electrical battery isolation switch	704
705	System circuit diagram (diesel) 24V ADR operation with control element	705
706	System circuit diagram (diesel) 24V ADR operation without auxiliary drive unit with control element	706
707	Schematic connection of the combination timer	707
801	Fuel supply	803
802	Webasto fuel extractor	803
803	Fuel extraction from the plastic tank (extraction through tank drain screw)	803
804	Fuel extraction from the plastic tank (extraction through tank fittings)	803
805	Pipe/Hose connections	804
806	Metering pump, installation position and attachment	804
807	Fuel filter	804
808	Exhaust silencer	805
809	Exhaust pipe mouth, installation position	805
810	Remove the fastening plate on the fuse holder	806
811	Fuse holder, installation position	806
812	Control element	806
813	Disconnect the plug	806
814	Specimen installation for heater in air circulation mode	807
901	Remove / Fit the casing parts	903
902	Change the control unit, combustion air fan and overheating sensor	906
903	Change the glow plug, flame sensor, combustion insert and the heat exchanger	908
904	Starting air hole in burner insert	910

1 Introduction

1.1 Contents and purpose

This workshop manual is designed to assist trained personnel with repairing both the petrol and the diesel versions of the Air Top 2000 ST air heaters.

1.1.1 Use of the air heaters

The Webasto Air Top 2000 ST air heaters are designed

- to heat cabins, boats, trucks, minibuses, vans, ambulances and motorhomes.
- to defrost vehicle windows

They are not designed for heating cargo areas used to carry hazardous substances.

The heaters operate independently of the engine and are connected to the fuel tank and the electrical system of the vehicle.

They are not designed for installation in vehicles with water or air-cooled engines.

1.2 Meaning of signal words

Throughout this manual, the signal words WARNING, CAUTION and NOTE have the following meanings:

WARNING

This heading is used to highlight operating instructions or procedures which, if not or not correctly followed, may result in personal injury or fatal accidents.

CAUTION

This heading is used to highlight operating instructions or procedures which, if not or not correctly followed, may result in damage to the equipment or its components.

NOTE

This heading is used to direct your attention to a special feature deemed essential to highlight.

1.3 Additional documentation

This workshop manual contains all the information and instructions required for repairing Air Top 2000 ST air heaters. The use of additional documentation is not normally required. If necessary the operating / installation instructions and the installation suggestion for the specific vehicle may also be used.

1.4 Statutory regulations and safety instructions

In principle, the general accident prevention regulations and current works safety instructions are applicable. The "General safety regulations" that go beyond the scope of the above regulations are stated below (see 1.4.2).

Any special safety regulations relevant to this instruction manual will be highlighted in the relevant sections or text passages of the procedures.

1.4.1 Statutory regulations governing installation

Air Top 2000 ST heaters have been type-tested and approved in accordance with EC Directives 72/245/EEC (EMC) and 2001/56/EC (heater) with the following EC permit numbers:

e1*72/245*95/54*1085*--

e1*2001/56*0022*--

Installation is governed above all by the provisions in Annex VII of Directive 2001/56/EC.

NOTE:

The provisions of these Directives are binding within the territory governed by EU Directive 70/156/EEC and should similarly be observed in countries without specific regulations.

(Extract from Directive 2001/56/EC Annex VII)

- 1.7.1. A clearly visible indicator within the user's field of vision must show whether the heater is switched on or off.

2. Regulations for installation in the vehicle

2.1. Scope

- 2.1.1. Subject to the provisions of paragraph 2.1.2, internal combustion heaters must be installed in accordance with the requirements contained in this Annex.
- 2.1.2. In the case of class O vehicles (trailers) with heaters for liquid fuel, it is presumed that these vehicles comply with the requirements in this Annex.

2.2 Position of the heater

- 2.2.1. Parts of the vehicle body and other components in the immediate vicinity of the heater must be protected against excessive heat and the danger of contamination by fuel or oil.

- 2.2.2. The internal combustion heater must not pose a fire hazard even when overheated. This requirement is deemed to have been met if care is taken during installation to ensure an adequate distance from all parts, as well as adequate ventilation and if fire-resistant materials or heat shields are used.
- 2.2.3. For class M₂ and M₃ vehicles the heater must not be installed in the passenger cabin. A device in a sealed cover, which also meets the requirements set out in paragraph 2.2.2, may be used, however.
- 2.2.4. The plate mentioned in paragraph 1.4 (model plate) or a duplicate thereof (duplicate model plate) must be fitted in such a way that it is still clearly legible when the heater has been installed in the vehicle.
- 2.2.5. When positioning the heater, all due precautions must be taken to minimise all risk of bodily injury, as well as damage to items in the vehicle.

2.3. Fuel supply

- 2.3.1. The fuel filler neck must not be located in the passenger compartment and must have a tightly fitting cap to prevent any fuel leaks.
- 2.3.2. The type of fuel and the fuel filler neck must be clearly identified on heaters for liquid fuel, for which the fuel supply is separate from the fuel supply for the vehicle.
- 2.3.3. A sign must be affixed to the fuel filler neck warning that the heater must be switched off before refuelling. An identical warning must also be included in the manufacturer's operating instructions.

2.4. Exhaust system

- 2.4.1. The exhaust outlet must be positioned in such a way that exhaust fumes cannot get into the interior of the vehicle through ventilation devices, hot-air inlets or open windows.

2.5. Combustion air inlet

- 2.5.1. The air for the combustion chamber of the heater must not be extracted from the passenger cabin of the vehicle.
- 2.5.2. The air inlet must be positioned in such a way that it cannot be obstructed by other objects.

2.6. Hot air inlet

- 2.6.1. The supply of heating air must consist of either fresh air or recirculated air and must be taken from a clean area which cannot be contaminated by exhaust fumes from the engine, the internal combustion heater or any other source in the vehicle.
- 2.6.2. The inlet line must be protected by a grating or other suitable means.

2.7. Hot air outlet

- 2.7.1. Hot air lines within the vehicle must be positioned or protected in such a way as to exclude all risk of injury or damage caused by direct contact.
- 2.7.2. The air outlet must be positioned or protected so that it cannot be obstructed by other objects.

2.8. Automatic control of the heating system

When the engine stops, the heating system must cut out automatically and the fuel supply must be stopped within 5 seconds.

The heating system may remain in operation if a manual unit has already been activated.

1.4.2 General safety information

The mouth of the exhaust pipe should be installed upwards, to the side or, if the exhaust pipe passes under the floor of the vehicle, to the side or rear limit of the driver's cab or the vehicle.

The function of important parts of the vehicle must not be adversely affected. It must not be possible for condensate or water to collect in the exhaust pipe. Drain holes may be used.

The electric cables and controls for the air-conditioning system must be arranged in the vehicle so that their proper functioning cannot be adversely affected in normal operating conditions.

Compliance with §§ 45 and 46 of the Road Vehicle Licensing Act must be ensured for the installation of fuel lines and the installation of additional fuel tanks.

The main points from this law:

- Fuel pipes must be designed in such a way that torsion in the vehicle, movements by the engine and the like do not have a negative effect on their durability. They must be protected from mechanical damage.
- Parts that carry fuel must be protected from heat that will adversely affect their function and positioned so that dripping or evaporating fuel cannot collect or ignite on hot parts or on electrical equipment.

The air heater's heat exchanger can be used for a maximum of 10 years and must then be replaced by the manufacturer or one of its authorised workshops using a genuine spare part. A label must then be affixed to the heater showing the date of sale and the wording "Genuine spare part".

When you change the heat exchanger it is essential that you also replace the overheating protection element (overheating sensor) to prevent possible function faults caused by using the old overheating sensor.

The Air Top 2000ST air heaters are prepared for interior installation and sealing directly on the cabin floor or a cabin wall. Non-release connections must be used in the interior for combustion air and exhaust pipes with the accessories available from Webasto.

The seal between the heater mounting and the vehicle floor must always be installed; otherwise harmful emissions may get into the interior of the vehicle.

The hot and combustion air intake openings must be positioned in such a way that no water can ingress into them if the vehicle drives through a water hazard for which it has been approved.

The heater must not be installed in the driver's or passenger cabin of buses (vehicle classes M₂ and M₃). If the heater is nevertheless installed in such a place, the installation box must be tightly sealed against the vehicle interior. The installation box must have sufficient external ventilation to ensure that a maximum temperature of 40°C is not exceeded in the box. Malfunctions may occur if the temperature exceeds this level.

The heater must be switched off at filling stations and fuel tank farms because of the risk of explosion.

Wherever inflammable vapours or dust may form (for example near fuel, coal, wood dust or cereal stores or the like), the heater must be switched off because of the risk of explosion.

The heater must not be operated in enclosed areas, such as garages or workshops without an exhaust emissions extraction system, not even using the timer, because of the risk of asphyxiation and poisoning.

In the event of lengthy heavy smoke development, unusual combustion noise or a smell of fuel, the heater must be put out of action by removing the fuse and must not be started again until it has been examined by Webasto-trained personnel. Liability claims can only be lodged if the claimant can prove that he has complied with the servicing and safety instructions.

Installation regulations for Webasto fuel tanks for supplying fuel to heaters in vehicles:

- The tank must not be installed in the passenger or driver's cabin of buses.
- The fuel filler neck must not be inside the passenger or driver's cabin in any vehicle.
- Fuel tanks for normal or super grades of petrol must not be immediately behind the front trim of the vehicle. They must be separated from the engine in such a way that in the event of an accident the fuel will not be expected to ignite. This does not apply to tractor units with an open driver's seat.

The fuel lines (Mecanyl hose) must not be immediately next to the exhaust pipe and must be thermally insulated if necessary, otherwise they will pose a fire risk.

All pipes that come into contact with fuel must have sealed connections, they must not be damaged in any way and they must be checked at regular intervals (at least the same intervals as for inspection of the vehicle as a whole).

NOTE

If any damage or leaks are found on the fuel line, the heater must not be used until the damage has been rectified by an authorised Webasto workshop. Put the heater out of action by removing the fuse.

Overheating

Keep hot air inlet and hot air outlet free of dirt and other items. Dirty, blocked air lines can cause the heater to shut down due to overheating.

After an overheating lock-out, check that the air system is clear, remove any materials that may block the air flow and have any damage to the air lines repaired by an authorised Webasto workshop. After this the heater lock-out can be cancelled by switching it off and then on again. If this action does not produce the required success (if the heater overheats again) take it to a Webasto-authorised workshop. Never remove the grating over the air inlet of the heater.

The air outlet jets or air vents with adjustable flaps must always be opened to some extent so that the air flow through the heater is not completely blocked. At least one air vent must be prevented from being closed.

If the heater is installed in a storage area, you must ensure that no inflammable substances are kept in this area and that other material does not restrict the air supply to the heater.

Air lines must be securely fixed to the heater (using pipe clips, for example) and all other connection points (for example vents).

IMPORTANT

The errors described below are to be avoided at all costs:

- Do not stand on the heater or place or throw any heavy objects on the heater.
- Do not place any items of clothing, textiles or similar materials over the heater or in front of the hot air inlet side and hot air outlet.
- The flow of hot air from the heater must not be restricted or blocked by highly inflammable substances or materials such as rags, cleaning wool, etc.
- Inflammable or explosive substances and gases must not be placed near or in contact with the heater, the hot air line, the flow of hot air or the exhaust pipe.
- The heater must not be cleaned with a high pressure cleaner.
- Do not switch the heater off at the main battery switch or battery isolation switch since otherwise it is possible that it may suffer long term damage if it is switched off frequently using the battery isolation switch and this can cause damage and negative influences on the function of the heater.

NOTE

Failure to follow the installation instructions and the notes contained therein will lead to all liability being refused by Webasto

The same applies if repairs are carried out incorrectly or with the use of parts other than genuine spare parts. This invalidates the type approval for the heater and its homologation / EC type permit.

You must read the operating manual before starting the heater for the first time.

1.5 Suggestions for improvements and changes

Complaints, improvement suggestions or corrections relating to this workshop manual should be addressed to

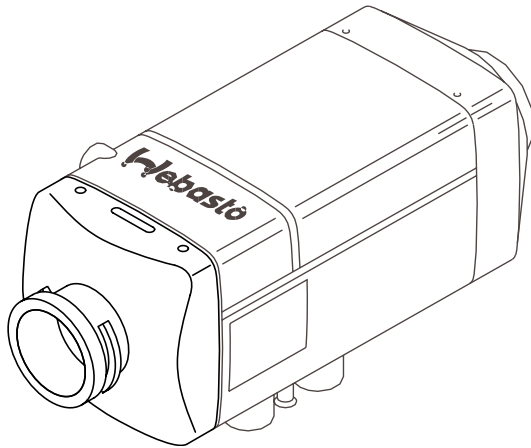
Webasto AG
BU: Special Products & Markets
Dept. B5.6.2
Kraillinger Str. 5
D-82131 Stockdorf

Phone: +49 (89) / 8 57 94 - 6 34
PC-Fax: +49 (89) / 8 57 94 - 3 97

2 General description

The Air Top 2000 ST airheater is based on the evaporator principle and essentially consists of the following

- the drive unit with a combustion and hot air blower
- the heat exchanger
- the burner insert with combustion pipe
- the control unit



Air Top 2000 ST air heater

To control and monitor it, the heater has

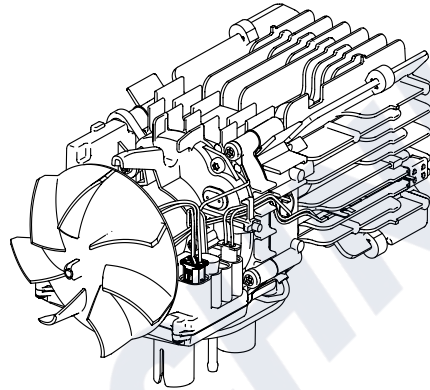
- a control unit with temperature sensor
- a flame sensor (only petrol heater)
- a glow plug
- an overheating sensor

inside it.

All Air Top 2000 ST heaters can also be controlled using an external temperature sensor.

The fuel supply is provided from an external source using a metering pump.

If a fault occurs, an error code will be output in the display of the combination or standard timer. If the heater has a control element, the ON control light will flash. In addition, the heater can be checked using a personal computer (see PC heater diagnostic operating manual).

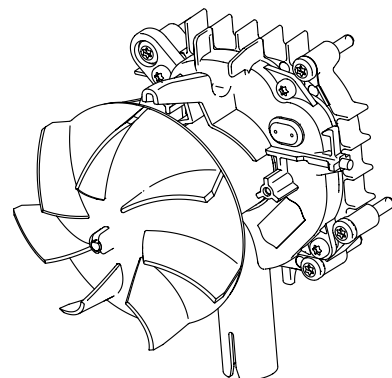


Air Top 2000 ST air heater without casing

2.1 Drive unit

The drive unit consists of the drive motor, the combustion air blower, the heat air blower and the intake casing. The combustion air blower supplies the air required for the combustion process from the combustion air inlet to the burner insert.

The removable hot air blower transports the hot air from the hot air inlet via the heat exchanger to the hot air outlet.



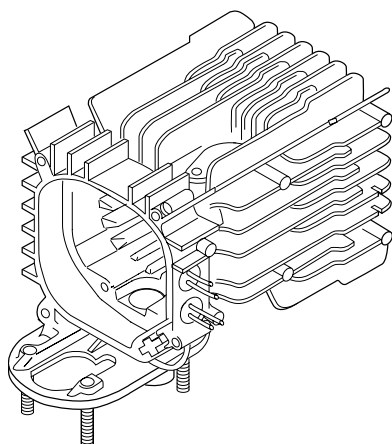
Drive unit

2 General description

Air Top 2000 ST

2.2 Heat exchanger

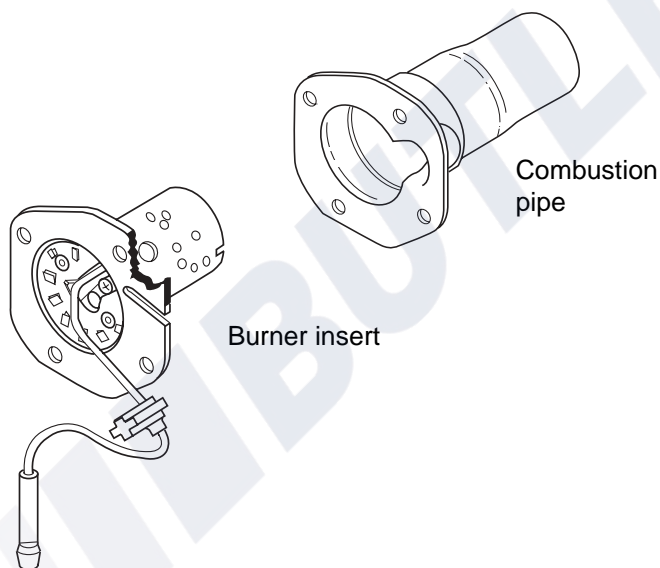
The heat generated by the combustion process is transferred to the air transported by the combustion and hot air blowers in the heat exchanger.



Heat exchanger

2.3 Burner insert with combustion pipe

The fuel is distributed over the burner cross-section in the combustion pipe in the burner insert. The mixture of fuel and air burns in the combustion pipe, thus causing the heat exchanger to become hot.



Burner insert with combustion pipe

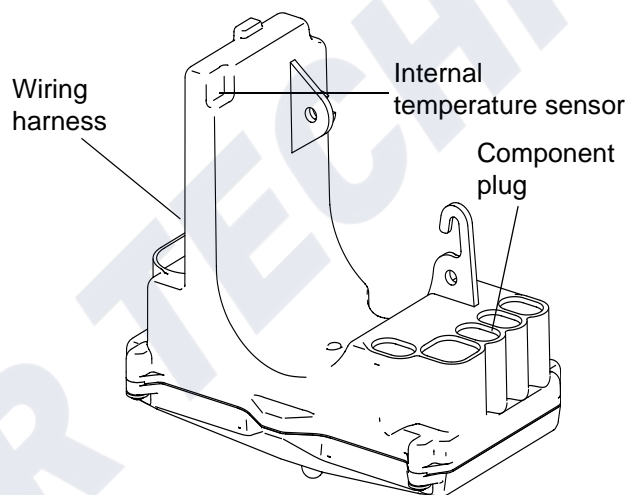
2.4 Control unit

The control unit is the central component for ensuring the function is maintained and for monitoring the heater's operation. A temperature sensor in the control unit is designed to control the room temperature. An external temperature may also be connected to all the heaters.

If a fault occurs, an error code will be output in the display of the combination timer.

If the heater has a control element, the ON control light will flash.

In addition, the heater can be checked using a personal computer (see PC heater diagnostic operating manual).

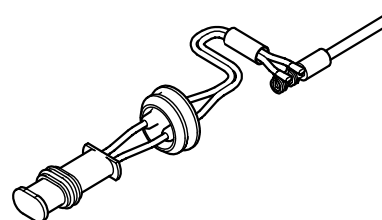


Control unit

2.5 Flame sensor (only petrol heater)

The flame sensor is a low-ohm PTC resistor, which changes its resistance depending on the heat emitted by the flame.

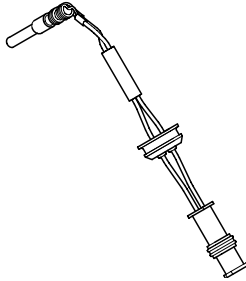
This change in resistance is analysed by the control unit so that the flame status is monitored whenever the heater is operating.



Flame sensor

2.6 Glow plug

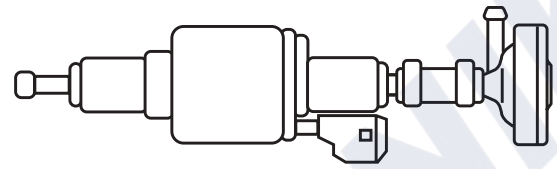
The mixture of fuel and air is ignited by the glow plug when the heater is started. The glow plug takes the form of an electrical resistor and is positioned in the burner insert on the side away from the flame.



Glow plug

2.8 Metering pump

The metering pump is a combined transport, metering and shut-off system for supplying fuel from the vehicle's tank to the heater.

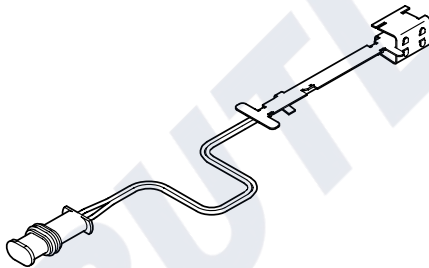


Metering pump DP 30.2/3 (with damper)

2.7 Overheating sensor

The overheating sensor measures the temperatures in the rib area of the heat exchanger whenever the heater is operating. The control unit evaluates the signal and protects the heater from hot air outlet temperatures above 150 °C and surface temperatures above 80 °C by shutting down the combustion process and blowing cold air over the heater.

The heater then suffers a fault lock-out and can be restarted by being switched off and then on again (see 3.2).



Overheating sensor

BUTLER TECHNIK

3 Function description

3.1 Control element

The control element is designed to switch the heater on and off, adjust the required room temperature (intake temperature between 5 °C and 35 °C) and to reset the heater after a fault.

The green LED serves as the On indicator (LED permanently lit up) and as a fault signal (LED flashes).

NOTE

ADR operation:

After an operating voltage has been applied by switching the battery isolation switch and control element to "ON", the control unit will be set to the "Fault lock-out" position. Before it can be restarted the control element must be set to "OFF".

3.2 Switch on

Set the control element to the required temperature.

If the hot air temperature is lower than the nominal temperature, the heater will start.

NOTE

If the temperature of the hot air intake is above the set nominal temperature, only the motor for the hot and combustion air blower will start (control pause). Special feature: The control pause speed is 0 rpm if boat heaters are used.

The function of the flame sensor is checked. If the flame sensor now reports "light", the system will attempt to cool the flame sensor for 60 seconds. If the flame sensor still reports "light" the control unit will suffer a fault lock-out. If another monitored component has suffered a fault, the fault lock-out will take effect without any slow down time.

Start

When the heater is switched on, the ON signal light will be lit and the glow plug will be switched on (cycled). The motor for the hot and combustion air blower will be set to approx. 50 % of its maximum speed.

After approx. 40 seconds the fuel metering pump will start, and the flame formation will begin. To improve the starting quality the metering pump and combustion air blower are started with different frequencies and speeds.

After a further 95 seconds (petrol) or 110 seconds (diesel) the glow plug will be switched off and the existence of the flame established.

Automatic restart

If no flame is detected, the starting procedure will be repeated. The glow plug will be switched on again (cycled). The motor for the hot and combustion air blower will be set to approx. 25 % of its maximum speed.

After approx. 30 seconds (petrol) or 50 seconds (diesel) the fuel metering pump will start, and the flame formation will begin. After a further 65 seconds (petrol) or 90 seconds (diesel) the glow plug will be switched off and the existence of the flame established.

If the heater has again failed to ignite properly, the heater will be shut down using a fault slow down procedure at maximum speed after 180 seconds and will suffer a fault lock-out.

NOTE

After a restart the heater will suffer a fault lock-out. To reset the fault switch the heater off briefly (min. 2 seconds) and switch back on.

3.3 Heating mode

While the heater is operating, the combustion gases pass through the heat exchanger. During this process the combustion heat is given off to the walls of the heat exchanger, absorbed by the hot air transported by the hot air blower and fed into the interior of the vehicle.

The temperature of the hot air intake is measured by a temperature sensor on the intake side of the heater or an external temperature sensor. If the measured temperature is lower than the value set on the control element, the output of the heater is increased to maximum heat output.

To increase the burner service life when it is used continuously the transport capacity of the metering pump is reduced for 10 seconds every 10 minutes. In addition, heating mode is interrupted every 8 hours in the same way as for a control pause.

3.4 Control mode

In control mode the blower speed and the metering pump delivery rate are dependent on the heat output. The glow plug is switched off.

3.5 Control pause

After the temperature set on the control element has been reached, the heat output is reduced. The speed of the heating and combustion air blower and the delivery rate of the metering pump are reduced.

If, at minimum heat output, the intake temperature set on the control element is exceeded, the metering pump is shut down and the combustion process ended. To burn off the flame properly the blower speed falls after 20 seconds to low-fire rate speed and then returns to the initial speed after 15 seconds, after which it falls to the control pause speed in 3 minutes, where it remains for the entire control pause.

The control pause speed on boat heaters is 0.

If the temperature set on the control element is not observed at the temperature sensor, the heater will restart.

NOTE

Changes to the setting on the control element are implemented by the control unit and heater after a delay.

3.6 Switch off

When the heater is switched off, the ON control LED on the control element goes out. If no fuel has been transported or if the heater is in the control pause, the heater is switched off immediately without a slow down time.

If the fuel transport has been started, it is ended immediately when the heater is switched off. The heater is switched off using the same method as the transition from control mode to control pause. The device is then switched off automatically.

NOTE

The heater may be switched on again during the slow down time. In this case the slow down time is completed and the heater is then restarted.

3.7 Heater functions when installed in ADR vehicles

NOTE

Only for Air Top 2000 ST diesel heaters that are installed in vehicles for transporting hazardous substances (ADR).

If the heater is switched off using the control element, the slow down time remains unchanged.

A brief slow down time (max. 40 seconds) is started automatically if

- the vehicle's engine is switched off
- a transport device is started.

After an ADR shut down process the control unit is in the "Fault lock-out" position. Before it can be restarted, the control element must be set to "OFF".

3.8 Fault lock-out

The control unit has identified errors on individual heater components and faults during the starting procedure and in operation. The heater is switched off and goes into fault lock-out if the following conditions occur:

- No repeated or incorrect start
- Temperature sensor defective
- Overheating sensor interrupt or short circuit
- Overheating sensor installed incorrectly
- Glow plug interrupt or short circuit
- Blower motor overload or blocked or short circuit or break
- Flame sensor interrupt or short circuit
- Error in the metering pump or overheating guard circuit (start phase only)
- Undervoltage below 10.5 V / 21 V for longer than 20 seconds
- Overvoltage above 16 V / 32 V for longer than 6 seconds
- Control module defective

The fuel supply is stopped if the heater overheats. The heater continues to run in the same way as if it is switched off manually. After it stops the control unit will be set to fault lock-out. After the slow-down phase the control module is set to fault lock-out if the overheating counter is greater than the value programmed in the data record (currently 20).

The overheating is indicated by the indicator flashing 10 times.

Rectify the cause of the fault.

To reset the fault, switch the heater off briefly (at least 2 seconds) and then on again.

3.8.1 Error monitor

The overheat, incorrect start and flame failure errors are counted and cause the heater to suffer a fault lock-out after an error has occurred the maximum number of times.

The incorrect start counter FSZ is incremented by 1 each time the heater fails to start and decremented by 1 each time it starts correctly, but does not fall below 0. If the incorrect start counter reaches its maximum value of 7, the heater will go into the heater lock-out status HGV.

The error counter SZ is incremented by 1 with each error for which there is no separate counter. The error counter is reset to 0 at the start of control mode. If the error counter reaches its maximum value of 10, the heater will go into the heater lock-out status HGV.

The overheating counter ÜHZ is incremented by 1 each time the heater overheats. If the overheating counter reaches its maximum value of 20, the heater will go into the heater lock-out status HGV.

The flame failure counter FAZ is increased by 1 each time the flame fails during heating mode. The counter is decremented by 1 each time the heater is in control mode.

If the FAZ reaches a value of 6, the heater will go into fault lock-out mode and the permanent flame failure counter FAZP will be incremented by 1. In control mode the permanent flame failure counter FAZP will be decremented by 1. When the heater is burning properly again, the FAZP will return to 0 after a few control cycles. If the permanent flame failure counter exceeds its maximum value of 6, however, the heater will go to permanent heater lock-out status (error code F12).

3.8.2 Reset a fault lock-out

The various fault lock-outs can be reset as follows.

Fault lock-out:	Switch heater off using the control element and then on again after more than 2 s
Heater fault lock-out:	Remove the fuse and reinsert it

BUTLER TECHNIK

4 Technical Data

Except where limit values are specified, the technical data listed in the table refer to the usual heater tolerances of $\pm 10\%$ at an ambient temperature of $+20\text{ °C}$ and at the rated voltage and in rated conditions.

Electrical components:

The control unit, combustion air blower (drive), metering pump, timer*, glow plug and control element are designed for 12 V or 24 V.

The components temperature sensor and flame monitor (only petrol heater) are not designed for a specific voltage.

* not for ADR

Fuel for Air Top 2000 ST B (petrol):

The fuel specified by the manufacturer must be used.

Fuel for Air Top 2000 ST D (diesel/PME):

The diesel fuel specified by the manufacturer must be used. Class EL heating oil -not L heating oil- may also be used as long as it complies with the normal quality available on the German market according to DIN 51603. We know of no negative influences due to additives. If fuel is extracted from the vehicle's tank, follow the additive instructions issued by the vehicle manufacturer. If you change to low-temperature fuel, the heater must be operated for approx. 15 minutes so that the fuel system is filled with the new fuel.

The Air Top 2000 ST D heater is also licensed for use with PME (bio-diesel), which complies with DIN EN 14214.

Heater	Operation	AT 2000 ST B		AT 2000 ST D	
Type test permit	EMC Heater	e1*72/245*95/54*1085*-- e1*2001/56*0022*--			
Model		Air heater with evaporator burner			
Heat output	Control range	1.0 -2.0 kW		0.9 -2.0 kW	
Fuel		Petrol		Diesel/PME	
Fuel consumption	Control range	0.1...0.2 kg/h (0.14...0.27 l/h)		0,1...0.21 kg/h (0.12...0.24 l/h)	
Rated voltage		12 V		12 V	24 V
Operating voltage range		10.5 ... 16 V		10.5 ... 16 V	21 ... 32 V
Rated power consumption	Control range	14 ... 29 W			
Max. ambient temperature: Heater - operation - warehouse Dosing pump - operation - warehouse Control element - operation - warehouse		-40 °C ... +40 °C -40 °C ... +85 °C -40 °C ... +20 °C -40 °C ... +85 °C -40 °C ... +75 °C -40 °C ... +85 °C			
Maximum combustion air inlet temperature		-40 °C ... +20 °C			
Adjustment range for interior temperature	Control range	+5 °C ... +35 °C			
Delivery rate for hot air at fan speed	against 0.5 mbar	Max. 93 m ³ /h at 4750 rpm			
CO ₂ in exhaust gas (perm. function range)	1 kW 2 kW	5.0 ... 8.0 9.0 ... 12.5		5.0 ... 8.0 9.0 ... 12.5	
Heater dimensions		Length 311 ± 2 mm Width 120 ± 1 mm Height 121 ± 1 mm			
Weight of heater		2.6 kg			

BUTLER TECHNIK

5 Troubleshooting

5.1 General

This section describes how to identify and remedy faults on the Air Top 2000 ST air heater.

If a fault occurs, an error code will be output in the display of the combination timer. If the heater has a control element, the ON control light will flash. In addition, the heater can be checked using a personal computer (see PC heater diagnostic operating manual).

CAUTION

Troubleshooting work demands precise knowledge of the structure and theory of operation of the various components and must be carried out by trained personnel only.

If in doubt, refer to sections 2 and 3 for a description of how the functions interact.

NOTE

For ADR mode only:

After an ADR shut-down or an operating voltage has been applied by switching the main vehicle switch and control element to "ON", the control unit will be set to the "Fault lock-out" position. Before it can be restarted, the control element must be set to "OFF" or the Immediate heat button pressed on the combination timer.

CAUTION

The troubleshooting guide is restricted to the localisation of defective components. The following potential sources of malfunctions have not been included and should always be checked so that they can then be excluded as the cause of the particular fault:

- **Corrosion on plugs**
- **Loose plug contacts**
- **Poor crimp contacts on plugs**
- **Corroded cables and fuses**
- **Corroded battery terminals**

If you wish to check individual components, the electrical plug connectors on the control unit must be disconnected.

Conduct a function test in the vehicle after rectifying each fault.

5.2 General error symptoms

The following table (Fig. 501) lists the possible error symptoms.

Error symptom	Possible cause	Remedy
Heater cuts out automatically	No combustion after start and restart ON indicator flashes	Switch heater off and then on again
	Flame extinguishes during operation ON indicator flashes	Switch heater off and then on again
	Heater overheats ON indicator flashes	Check that the hot air system is clear, allow the heater to cool, switch heat off briefly and then on again
	Battery voltage too low ON indicator flashes	Charge battery Switch heater off and then on again
Heater produces black smoke	Combustion air and/or exhaust system blocked	Check that the combustion air and exhaust systems are clear

Fig. 501 General error symptoms

5.3 Error symptoms during function

The following table (Fig. 502) lists the possible error symptoms in the order in which they may occur during operation.

In the event of a fault, the error is to be located using this table and rectified. It is important that the error symptom is correctly identified.

If the error symptom is not included in this table or the fault is not found under the specific

error symptom heading, in an emergency you can contact our technicians on our service hotline (see last page).

NOTE

Every fault is indicated by the flashing LED on the control element after the slow down time has finished. If the other components are OK, a defective control unit may be the cause of all the faults.

There are statuses that are the same as errors.

Error symptom	Occurrence	Possible cause
No start and no illumination of the LED on the control element	Immediate	Incorrect cabling, defective fuse
No start but LED is lit	Immediate	The heater goes straight to control pause when it is switched on, whereby the control pause speed is 0 rpm for a boat heater.

Fig. 502 Error symptoms during function

5.4 Error code output

If the heater is fitted with a combination timer, an error code output will appear on the display of the timer after a fault occurs.

NOTE

The error code is output if the heater is fitted with a controlelement after an error has occurred by the switch-on indicator/error code indicator flashing. After 5 seconds of fast flashing, the error code will be output by a sequence of long flash pulses, the number of flashes is shown in the table below (for example F04 – 4 long flash pulses).

Error code	Error (group)	Additional information during PC diagnostic	Remedy
F 00	Control unit error	01 Control unit error 81 EOL checksum error 11 Incorrectly coded control unit or incorrect heater (fuel type) installed (the heater will not work if this error occurs) 91 Neutrally coded or disabled control unit (the heater will not work if this error occurs) 92 Maintain command failed (the heater will not work if this error occurs) 18 Customer bus defective	Replace control unit
F 01	No start	02 Even after the restart, no flame has formed 82 No start in test	Check fuel supply (tank empty, lines blocked) Clean burner insert, Petrol: Replace flame sensor Diesel: Replace overheating sensor / control unit
F 02	Flame failure	03 The flame has gone out during operation and has not reformed after a restart attempt 83 The flame has gone out during a heating cycle more than FAZ times (EEPROM)	Check fuel supply (tank empty, lines blocked) Clean burner insert, Petrol: Replace flame sensor Diesel: Replace overheating sensor / control unit
F 03	Undervoltage or overvoltage	84 The voltage was less than 10.5 V or 21 V for longer than 20 seconds 04 The voltage was more than 16 V or 32 V for longer than 6 seconds	Charge battery

Fig. 503 Troubleshooting (page 1 of 3)

5 Troubleshooting

Air Top 2000 ST

Error code	Error (group)	Additional information during PC diagnostic	Remedy
F 04	Premature flame recognition	05 A flame was detected before combustion had started	Diesel: Replace overheating sensor / control unit Petrol: Replace flame sensor
F 05	Flame sensor interrupt or short circuit (only petrol heater)	1A Flame sensor circuit The switched cable of the element has a short circuit to earth 9A Flame sensor circuit Break or short circuit to +Ub	Replace flame sensor Replace flame sensor
F 06	External temperature sensor break or short circuit	14 Temperature sensor circuit Short circuit to earth 94 Temperature sensor circuit break or short circuit to +Ub	Check cables / replace temperature sensor Check cables and terminating resistor / replace temperature sensor
F 07	Metering pump interrupt or short circuit	88 Break or short circuit to +Ub 08 Short circuit to earth	Check cables / replace metering pump Check cables / replace metering pump
F 08	Drive unit (combustion and hot air blower) break or short circuit	89 Break or short circuit to +Ub 09 The switched drive unit cable (combustion and hot air blower) has a short circuit to earth or the drive unit is overloaded 15 Burner motor block guard has tripped 95 Burner motor blocking detection has tripped	Replace drive unit (combustion and hot air blower) Eliminate the cause of the blockage / difficulty in movement Replace drive unit (combustion and hot air blower)
F 09	Glow plug interrupt or short-circuit	8A Glow plug: Break or short circuit to +Ub 19 Glow circuit The switched cable of the element has a short circuit to earth	Replace glow plug Replace glow plug

Fig. 503 Troubleshooting (page 2 of 3)

Error code	Error (group)	Additional information during PC diagnostic	Remedy
F 10	Overheating	06 The overheating fault lock-out has tripped (heater overheated) 17 Incorrect application or illegal insulation (ÜHS gradient too high)	Find and remove the cause of the overheating NOTE If no other cause can be found for the overheating, the pressure losses caused by the hot air distribution (too many resistance points) are too high or a hot air filter is soiled
F 11	Overheating sensor interrupt or short circuit	AB Overheating sensor circuit break or short circuit to +Ub 1B Overheating sensor circuit. The switched cable of the element has a short circuit to earth	Replace overheating sensor Replace overheating sensor
F 12	Heater fault lock-out	07 The heater fault lock-out has been activated	Remove the fuse and then refit it NOTE The following error has occurred several times: Fault counter more than 3 times Incorrect start counter more than 9 times Overheating counter more than 3 times
F 14	Overheating sensor incorrect position	97 Incorrect position of overheating sensor (ÜHS gradient too low)	Position the overheating sensor correctly
F 15	Nominal sensor break	9B Nominal value potentiometer circuit break or short circuit to +Ub	Check cables / replace control element

Fig. 503 Troubleshooting (page 3 of 3)

BUTLER TECHNIK

6 Function tests

6.1 General

This section describes the tests conducted on the heater when it is installed and not installed to verify that it is in working order.

WARNING

The heater must not be operated in enclosed areas such as garages and workshops without an emissions extraction system.

6.2 Settings

6.2.1 Setting the CO₂ content

The CO₂ content in the emissions is set using the adjustment knob on the control element. At a constant blower speed the volume of fuel is controlled by changing the metering pump cycle.

CAUTION

The CO₂ measuring instruments must be calibrated. The heater must be switched off.

1. Connect the CO₂ line to minus.
2. Turn the adjustment knob on the control element to the centre setting. The heater will start and go automatically to low-fire rate mode.

NOTE

If the heater can be adjusted, the operating indicator will flash as if the control unit has suffered an error.

Diesel unit:

3. Set the CO₂ value by turning the adjustment knob. Turning it anti-clockwise will reduce the CO₂ value, whilst turning it clockwise will increase it. The measured CO₂ content at low-fire rate (1.5 kW) must be between 5.0 % and 8.0 %. In high-fire mode, the CO₂ content should be 10.3 +/- 0.5 % v/v after the setting has been made.

Petrol unit:

4. The CO₂ content may only be measured when the unit is at operating temperature. The unit must be run for at least 8 minutes for this purpose. After this the CO₂ content is to be set to 6.1 - 6.2 % v/v in low-fire mode (1 kW). In high-fire mode, the CO₂ content should be 9.9 +/- 0.4 % v/v after the setting has been made.
5. If the CO₂ value is within this range, disconnect the CO₂ line from minus. This saves the setting.

NOTE

The heater will now run in normal mode again and can be switched off as normal using the control element. The heater is set at the factory to match the fitted combustion air blower.

6.3 Testing individual components

CAUTION

For function tests always break the connection between the control unit and the component you wish to test.

6.3.1 Glow plug resistance test

NOTE

The resistance test must be carried out with an ohmmeter suitable for small resistance values. A resistance test with a simple digital multimeter is too inaccurate to find the precise values. A new glow plug can be measured to act as a reference.

The glow plug should have the following values in the test:

Glow plug:	12 V (red)	24 V (green)
Resistance at 25 °C:	0.263 ... 0.323 Ohm	1.125 ... 1.375 Ohm
Test current:	< 5 mA	< 5 mA

6.3.2 Resistance test on flame sensor (only petrol heater)

If you conduct this test with a digital multimeter, the flame sensor must have the following values:

Cold testing:

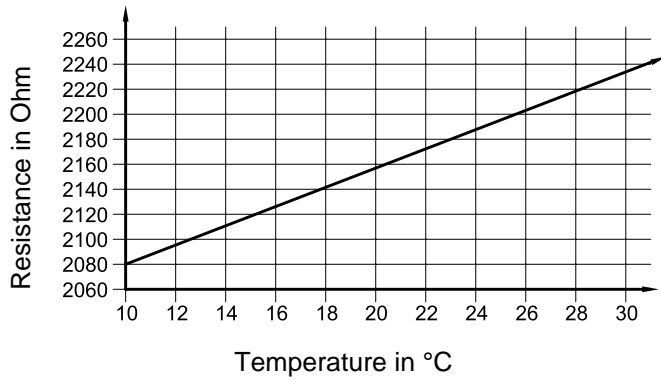
Resistance at 25 °C:	2.6 ... 3.4 Ohm
Test current:	< 5mA

Hot testing:

Resistance at 800 – 1000 °C:	12 ... 15 Ohm
Test current:	< 5 mA
(ceramic rod at red heat over length of approx. 20 mm)	

6.3.3 Overheating sensor resistance test

If you conduct this test with a digital multimeter, the overheating sensor must have the values shown in the following diagram:



Characteristic resistance values of a
PT 2000 overheating system
in a temperature range of 10 °C to 30 °C

BUTLER TECHNIK

7 Circuit diagrams

7.1 General

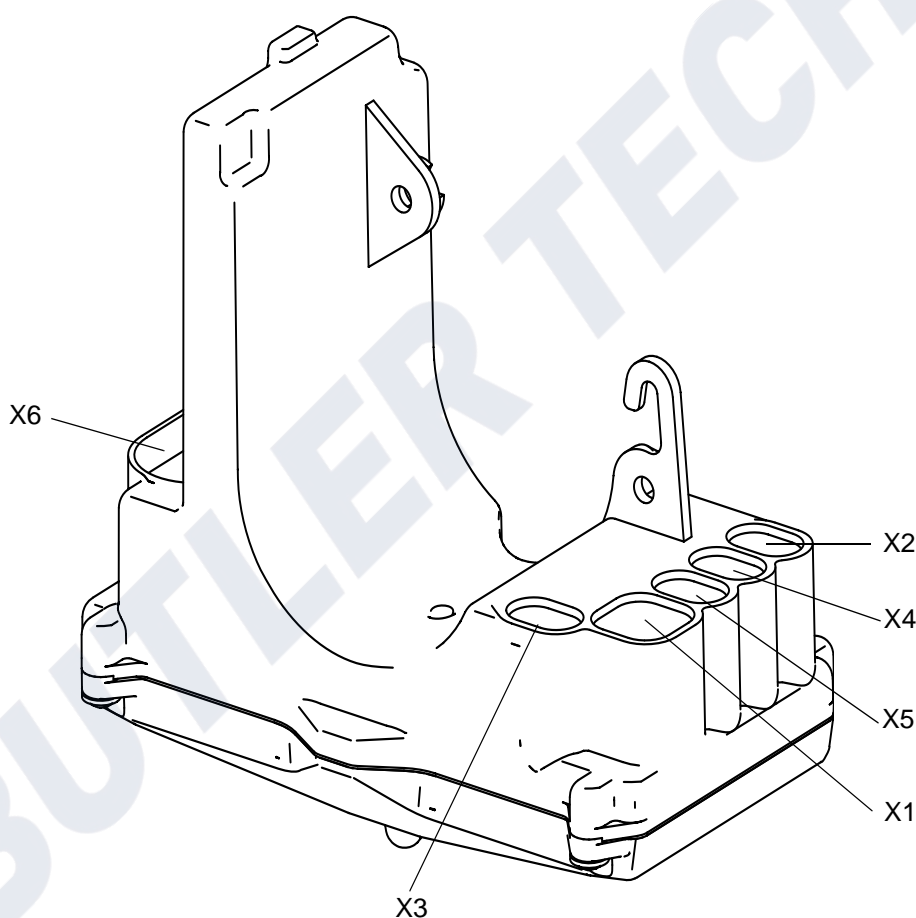
The Air Top 2000 ST heater can be controlled with the control element (nominal value adjuster/switch) or a combination timer.

The circuit diagrams (Fig. 702 to 706) show the possible circuits for 12 and 24 V with

- Control element and vehicle blower
- Combination timer and vehicle blower
- Combination timer and electrical battery isolation switch
- ADR operation with control element
- ADR operation without auxiliary drive with control element

Fig. 701 shows the plug assignment on the control unit.

Fig. 707 shows the schematic connection of the combination timer.

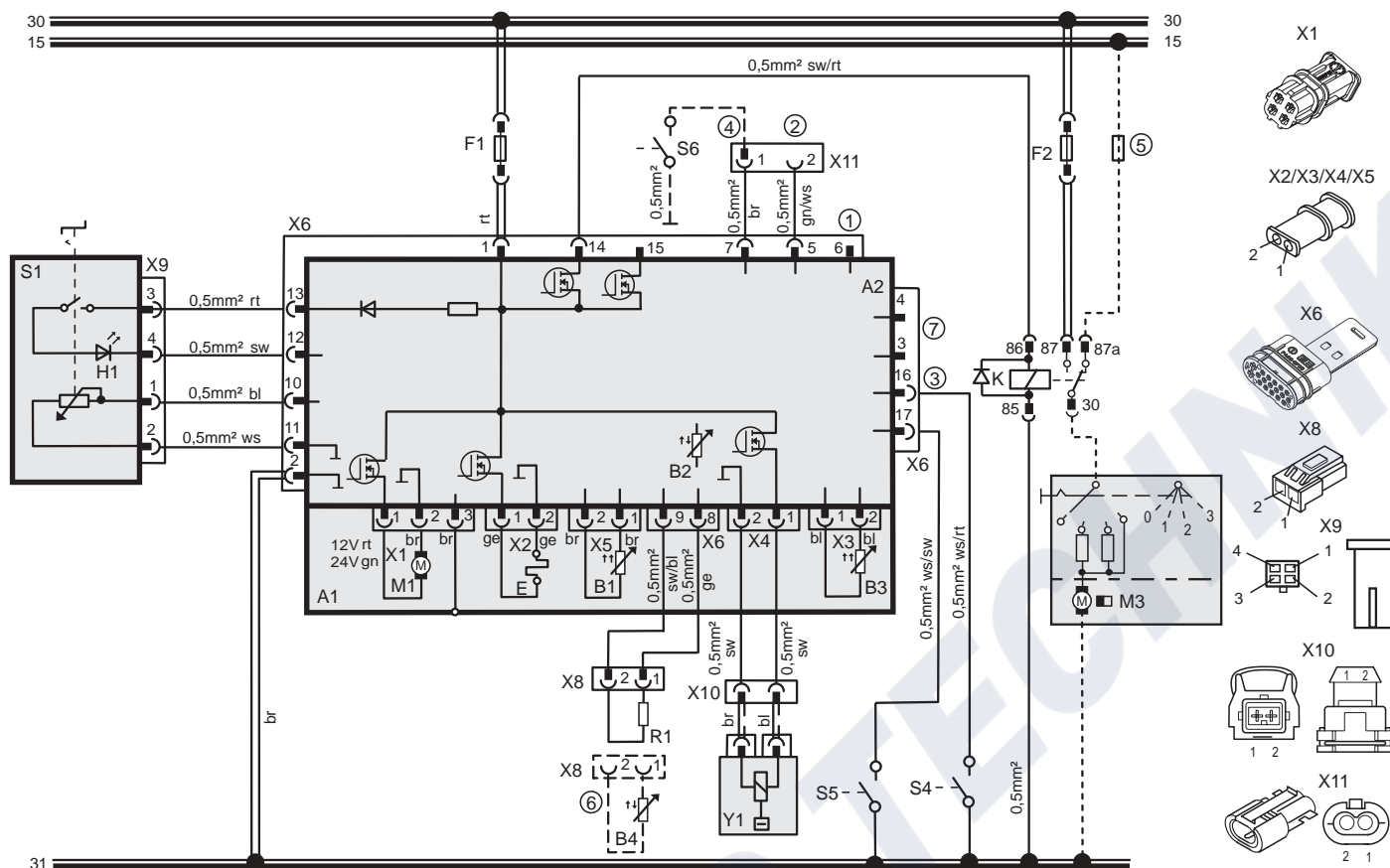


- X1 = Combustion and hot air blower connection
- X2 = Glow plug connection
- X3 = Overheating sensor connection
- X4 = Metering pump connection
- X5 = Flame sensor connection (only petrol heater)
- X6 = Wiring harness connection

Fig. 701 Plug assignment

7 Circuit diagrams

Air Top 2000 ST



- ① Diagnostic K cable
- ② W bus
- ③ Input pin (pin 16/plug X6), cable colour on wiring harness: white/red):
"Ventilation" (fan speed depends on the position of the control element)
- ④ CO₂ setting
- ⑤ Fuse installed in vehicle
- ⑥ If you use an external temperature sensor (B4), the resistor (R1) is replaced by the temperature sensor (B4).
- ⑦ Connection for ADR vehicles only

Cable cross-sections

	< 7.5 m	7.5 15 m
—	0.75 mm ²	1.0 mm ²
---	0.75 mm ²	1.0 mm ²
---	1.0 mm ²	1.5 mm ²
---	1.5 mm ²	2.5 mm ²
---	2.5 mm ²	4.0 mm ²
---	4.0 mm ²	6.0 mm ²
-----	Standard cable	

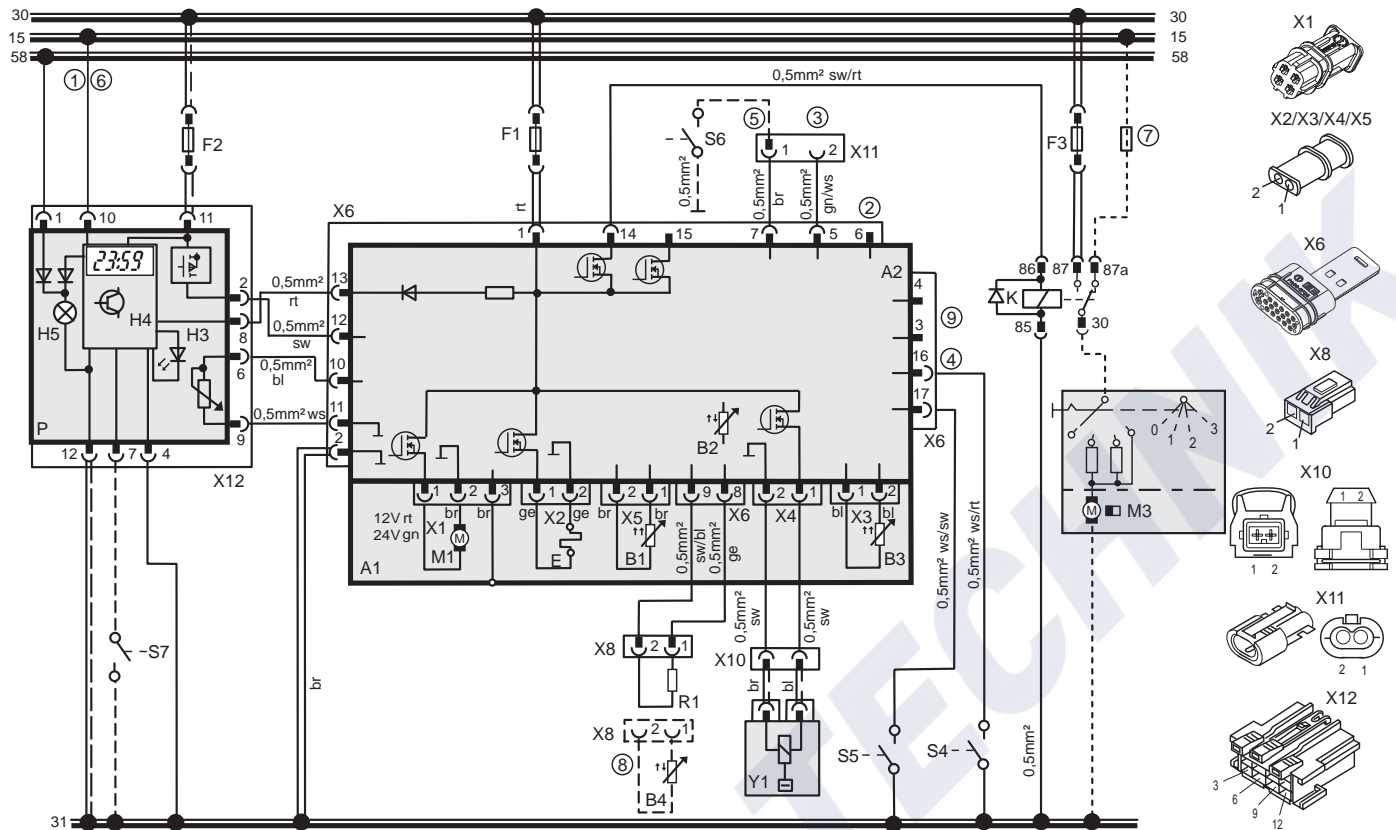
Cable colours

bl	Blue
br	Brown
ge	Yellow
gn	Green
gr	Grey
or	Orange
rt	Red
sw	Black
vi	Violet
ws	White

Item	Designation	Comment
A1	Heater	Air Top 2000 ST
A2	Control unit	
B1	Flame sensor	only petrol heater
B2	Temperature sensor	Internal
B3	Overheating sensor	Overheating guard
B4	Temperature sensor	External
E	Glow plug	
F1	Fuse 15A (max. 20A)	Flat fuse SAE J 1284
F2	Fuse 20 A	Flat fuse SAE J 1284
K	Relay with free-wheeling diode	for vehicle fan
H1	LED, green (in item S1)	Indicator
M1	Motor	Combustion and hot air fan
M3	Motor	Vehicle fan
R1	Resistor 620 Ω	With internal temperature sensor only
S1	Control element	Setpoint generator switch

Item	Designation	Comment
S4	Switch	Ventilation
S5	Switch	Flashover sensor
S6	Switch	CO ₂ setting
X1	Plug connector, 4-pin	to item A2
X2	Plug connector, 2-pin	to item A2
X3	Plug connector, 2-pin	to item A2
X4	Plug connector, 2-pin	to item A2
X5	Plug connector, 2-pin	to item A2
X6	Plug connector, 18-pin	to item A2
X8	Plug connector, 2-pin	
X9	Plug connector, 4-pin	to item S1
X10	Plug connector, 2-pin	
X11	Plug connector, 2-pin	
Y1	Dosing pump	

Fig. 702 System circuit diagram 12V/24V with control element and vehicle blower



- ① With positive from terminal (15/75) to connection 10:
Permanent operation for immediate heat as long as the ignition is switched on
Without positive at connection 10:
Heating time is variably programmable (10 min to 120 min),
default setting 120 min
- ② Diagnostic K cable
- ③ W bus
- ④ Input pin (pin 16/plug X6), cable colour on wiring harness: white/red):
"Ventilation" (fan speed depends on the position of the control element)
- ⑤ CO₂ setting
- ⑥ **NOTE**
If the connection is made to terminal 30, permanent heating is possible with the ignition switched off. In this case no connection must be made to terminal 15/75.
- ⑦ Fuse installed in vehicle
- ⑧ If you use an external temperature sensor (B4), the resistor (R1) is replaced by the temperature sensor (B4).
- ⑨ Connection for ADR vehicles only

Cable cross-sections

	< 7.5 m	7.5 15 m
—	0.75 mm ²	1.0 mm ²
- - -	0.75 mm ²	1.0 mm ²
- - -	1.0 mm ²	1.5 mm ²
—	1.5 mm ²	2.5 mm ²
—	2.5 mm ²	4.0 mm ²
—	4.0 mm ²	6.0 mm ²
- - - - -	Standard cable	

Cable colours

bl	Blue
br	Brown
ge	Yellow
gn	Green
gr	Grey
or	Orange
rt	Red
sw	Black
vi	Violet
ws	White

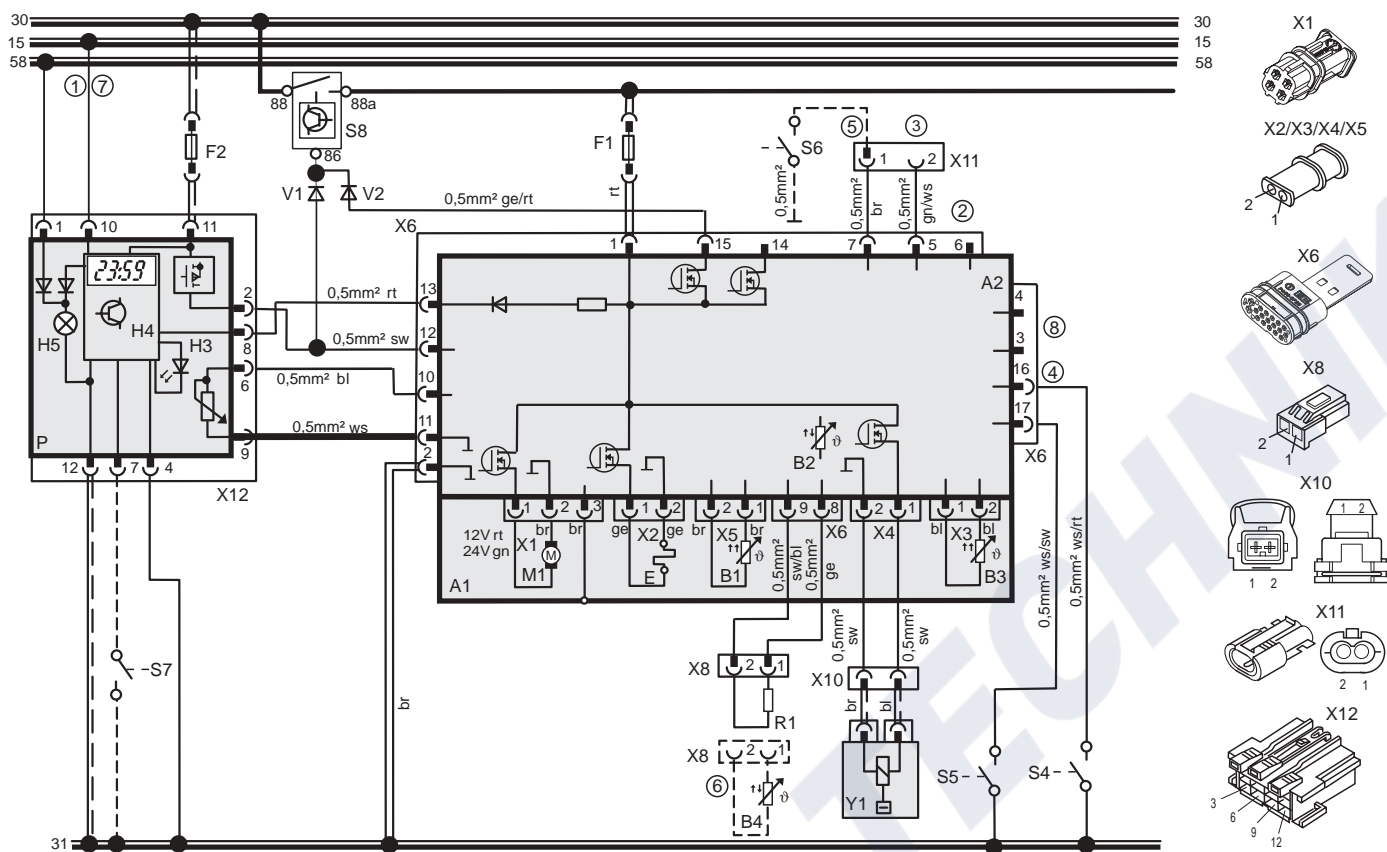
Item	Designation	Comment
A1	Heater	Air Top 2000 ST
A2	Control unit	
B1	Flame sensor	only petrol heater
B2	Temperature sensor	Internal
B3	Overheating sensor	Overheating guard
B4	Temperature sensor	External
E	Glow plug	
F1	Fuse 15A (max. 20A)	Flat fuse SAE J 1284
F2	Fuse max. 15A	Flat fuse SAE J 1284
F3	Fuse 20 A	Flat fuse SAE J 1284
H3	Red LED (in item P)	Immediate heat button light Ready indicator, switch-on indicator
H4	Heating symbol in the display (in item P)	Indicator
H5	Light (in item P)	Display and button lights
K	Relay with free-wheeling diode	for vehicle fan
M1	Motor	Combustion and hot air fan

Item	Nomenclature	Remark
M3	Motor	Vehicle fan
P	Combination timer (1531)	Timer and setpoint generator
R1	Resistor 620 Ω	With internal temperature sensor only
S4	Switch	Ventilation
S5	Switch	Flashover sensor
S6	Switch	CO ₂ setting
S7	Momentary-contact switch	Immediate heat button remote control
X1	Plug connector, 4-pin	to item A2
X2	Plug connector, 2-pin	to item A2
X3	Plug connector, 2-pin	to item A2
X4	Plug connector, 2-pin	to item A2
X5	Plug connector, 2-pin	to item A2
X6	Plug connector, 18-pin	to item A2
X8	Plug connector, 2-pin	
X10	Plug connector, 2-pin	
X11	Plug connector, 2-pin	
X12	Plug connector, 12-pin	to item P
Y1	Dosing pump	

Fig. 703 System circuit diagram 12V/24V with combination timer and vehicle blower

7 Circuit diagrams

Air Top 2000 ST



- ① With positive from terminal (15/75) to connection 10:
Permanent operation for immediate heat as long as the ignition is switched on
Without positive at connection 10:
Heating time is variably programmable (10 min to 120 min),
default setting 120 min

- ② Diagnostic K cable

- ③ W bus

- ④ Input pin (pin 16/plug X6), cable colour on wiring harness: white/red):
"Ventilation" (fan speed depends on the position of the control element)

- ⑤ CO₂ setting

- ⑥ If you use an external temperature sensor (B4), the resistor (R1)
is replaced by the temperature sensor (B4).

- ⑦ **NOTE**

If the connection is made to terminal 30, permanent heating is possible with the ignition switched off. In this case no connection must be made to terminal 15/75.

- ⑧ Connection for ADR vehicles only

Cable cross-sections

	< 7.5 m	7.5 15 m
—	0.75 mm ²	1.0 mm ²
- - -	0.75 mm ²	1.0 mm ²
- - -	1.0 mm ²	1.5 mm ²
—	1.5 mm ²	2.5 mm ²
—	2.5 mm ²	4.0 mm ²
—	4.0 mm ²	6.0 mm ²
- - - - -	Standard cable	

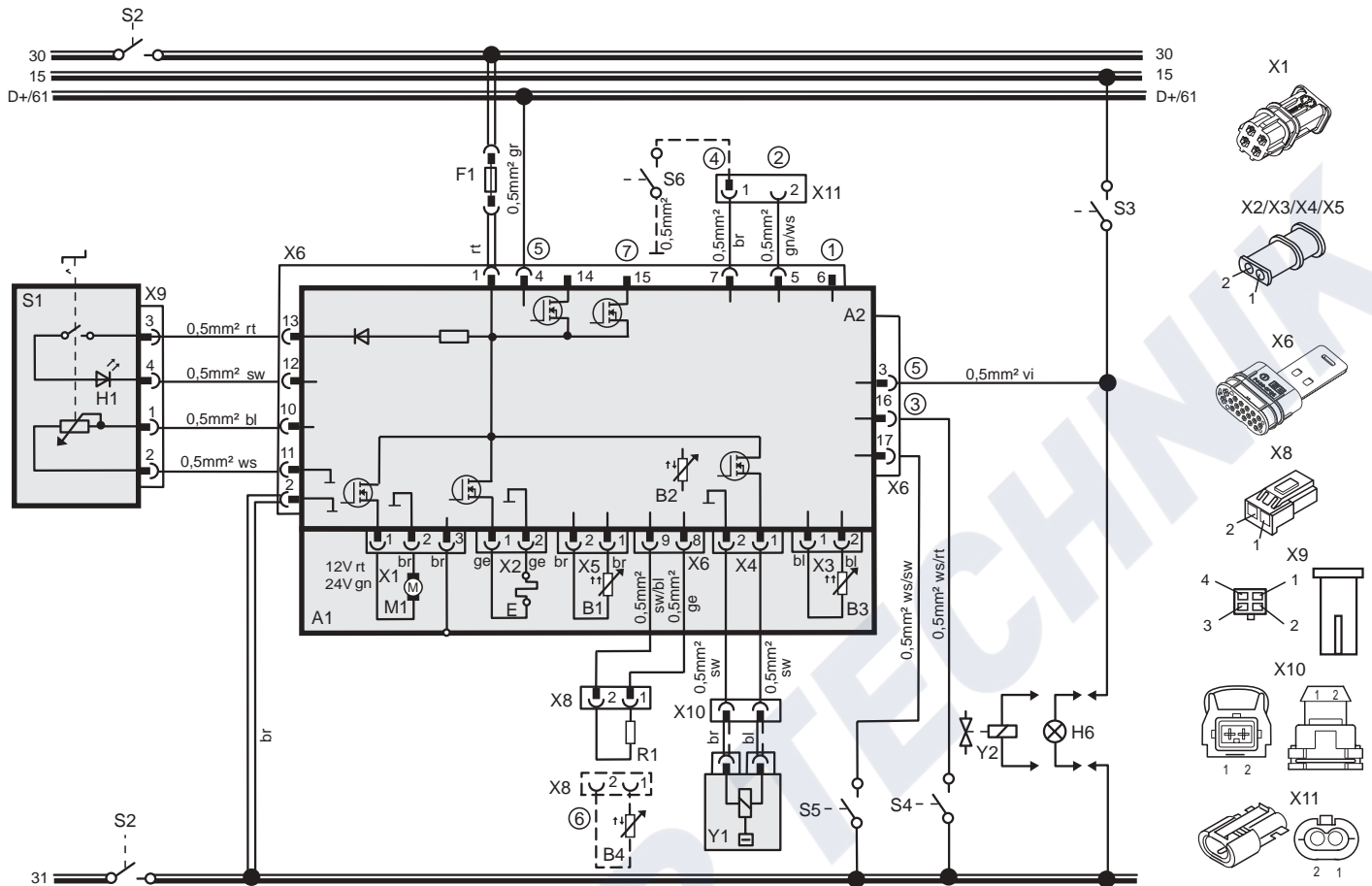
Cable colours

bl	Blue
br	Brown
ge	Yellow
gn	Green
gr	Grey
or	Orange
rt	Red
sw	Black
vi	Violet
ws	White

Item	Designation	Comment
A1	Heater	Air Top 2000 ST
A2	Control unit	
B1	Flame sensor	only petrol heater
B2	Temperature sensor	Internal
B3	Overheating sensor	Overheating guard
B4	Temperature sensor	External
E	Glow plug	
F1	Fuse 15A (max. 20A)	Flat fuse SAE J 1284
F2	Fuse max. 15A	Flat fuse SAE J 1284
H3	Red LED (in item P)	Immediate heat button light Ready indicator, switch-on indicator
H4	Heating symbol in the display (in item P)	Indicator
H5	Light (in item P)	Display and button lights
M1	Motor	Combustion and hot air fan
P	Combination timer (1531)	Timer and setpoint generator
R1	Resistor 620 Ω	With internal temperature sensor only

Item	Designation	Comment
S4	Switch	Ventilation
S5	Switch	Flashover sensor
S6	Switch	CO ₂ setting
S7	Momentary-contact switch	Immediate heat button remote control
S8	Battery isolation switch	
V1	Diode	
V2	Diode	
X1	Plug connector, 4-pin	to item A2
X2	Plug connector, 2-pin	to item A2
X3	Plug connector, 2-pin	to item A2
X4	Plug connector, 2-pin	to item A2
X5	Plug connector, 2-pin	to item A2
X6	Plug connector, 18-pin	to item A2
X8	Plug connector, 2-pin	
X10	Plug connector, 2-pin	
X11	Plug connector, 2-pin	
X12	12-pin plug connection	to item P
Y1	Dosing pump	

Fig. 704 System circuit diagram 12V/24V with combination timer and electrical battery isolation switch



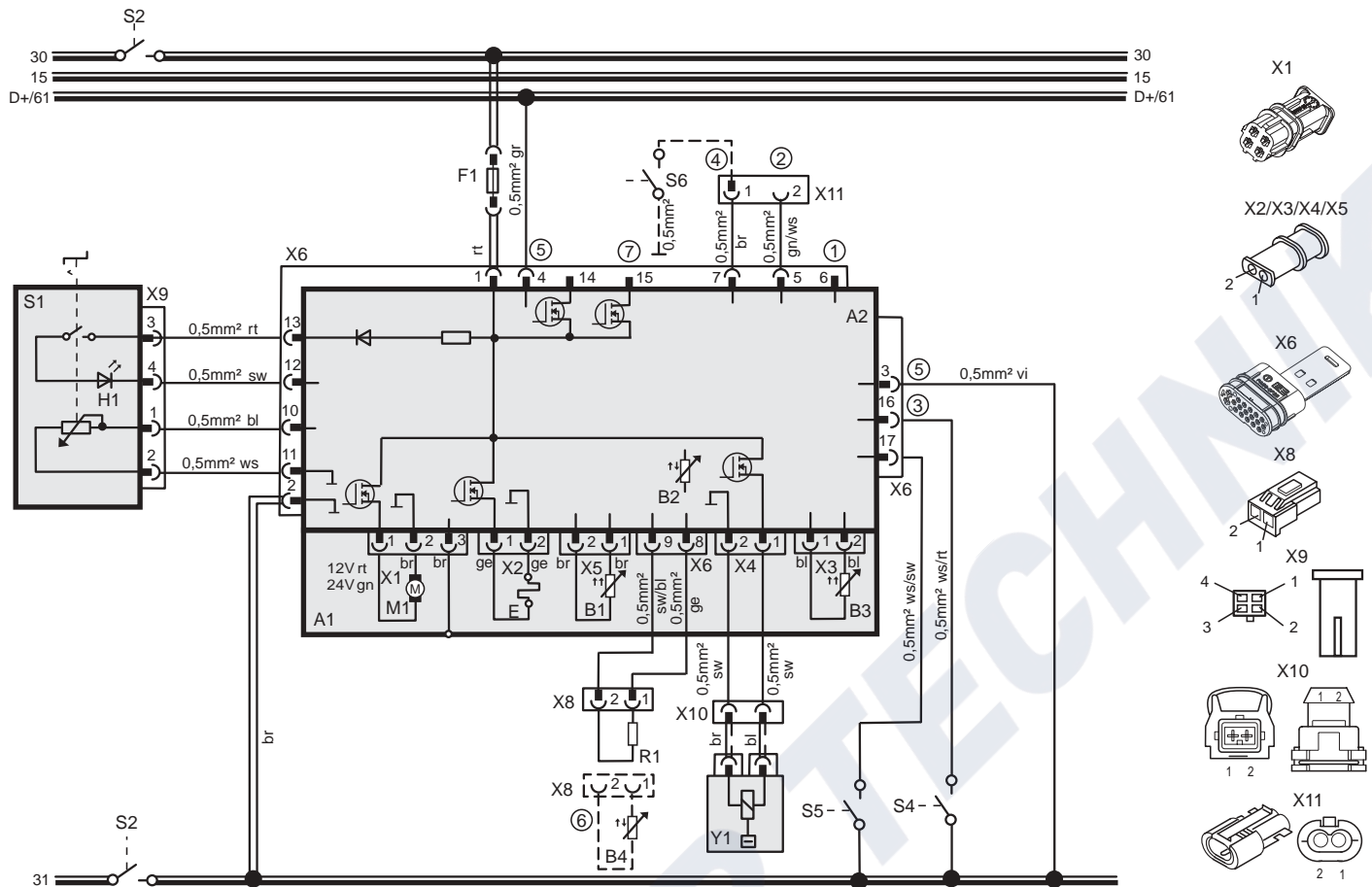
Item	Designation	Comment
A1	Heater	Air Top 2000 ST
A2	Control unit	
B1	Flame sensor	only petrol heater
B2	Temperature sensor	Internal
B3	Overheating sensor	Overheating guard
B4	Temperature sensor	External
E	Glow plug	
F1	Fuse 15A (max. 20A)	Flat fuse SAE J 1284
H1	LED, green (in item S1)	Indicator
H6	Light (at least 1.2 W)	Switch-on indicator pumping device
M1	Motor	Combustion and hot air fan
R1	Resistor 620 Ω	With internal temperature sensor only
S1	Control element	Setpoint generator switch
S2	1 or 2-pin disconnecting switch	Emergency Stop switch
S3	Switch	to or for pumping device
S4	Switch	Ventilation

Item	Designation	Comment
S5	Switch	Flashover sensor
S6	Switch	CO ₂ setting
X1	Plug connector, 4-pin	to item A2
X2	Plug connector, 2-pin	to item A2
X3	Plug connector, 2-pin	to item A2
X4	Plug connector, 2-pin	to item A2
X5	Plug connector, 2-pin	to item A2
X6	Plug connector, 18-pin	to item A2
X8	Plug connector, 2-pin	
X9	Plug connector, 4-pin	to item S1
X10	Plug connector, 2-pin	
X11	Plug connector, 2-pin	
Y1	Dosing pump	
Y2	Solenoid valve for pumping device	

Fig. 705 System circuit diagram (diesel) 24V ADR mode with control element

7 Circuit diagrams

Air Top 2000 ST



- ① Diagnostic K cable
- ② W bus
- ③ Input pin (pin 16/plug X6), cable colour on wiring harness: white/red:
"Ventilation" (fan speed depends on the position of the control element)
- ④ CO₂ setting
- ⑤ **NOTE**
Grey and violet cables required for ADR function
- ⑥ If you use an external temperature sensor (B4), the resistor (R1) is replaced by the temperature sensor (B4).
- ⑦ Holding signal for electrical battery isolation switch
The holding input (if there is one) for the isolation switch (S2) must be connected to the control unit in PIN 15/plug X6.

Cable cross-sections			
	< 7.5 m	7.5	15 m
—	0.75 mm ²	1.0	mm ²
- - -	0.75 mm ²	1.0	mm ²
- - -	1.0 mm ²	1.5	mm ²
—	1.5 mm ²	2.5	mm ²
—	2.5 mm ²	4.0	mm ²
—	4.0 mm ²	6.0	mm ²
- - - -	Standard cable		

Cable colours	
bl	Blue
br	Brown
ge	Yellow
gn	Green
gr	Grey
or	Orange
rt	Red
sw	Black
vi	Violet
ws	White

Item	Designation	Comment
A1	Heater	Air Top 2000 ST
A2	Control unit	
B1	Flame sensor	only petrol heater
B2	Temperature sensor	Internal
B3	Overheating sensor	Overheating guard
B4	Temperature sensor	External
E	Glow plug	
F1	Fuse 15A (max. 20A)	Flat fuse SAE J 1284
H1	LED, green (in item S1)	Indicator
M1	Motor	Combustion and hot air fan
R1	Resistor 620 Ω	With internal temperature sensor only
S1	Control element	Setpoint generator switch
S2	1 or 2-pin disconnecting switch	Emergency Stop switch
S4	Switch	Ventilation
S5	Switch	Flashover sensor

Item	Designation	Comment
S6	Switch	CO ₂ setting
X1	Plug connector, 4-pin	to item A2
X2	Plug connector, 2-pin	to item A2
X3	Plug connector, 2-pin	to item A2
X4	Plug connector, 2-pin	to item A2
X5	Plug connector, 2-pin	to item A2
X6	Plug connector, 18-pin	to item A2
X8	Plug connector, 2-pin	
X9	Plug connector, 4-pin	to item S1
X10	Plug connector, 2-pin	
X11	Plug connector, 2-pin	
Y1	Dosing pump	

Fig. 706 System circuit diagram (diesel) 24V ADR mode without auxiliary drive unit with control element

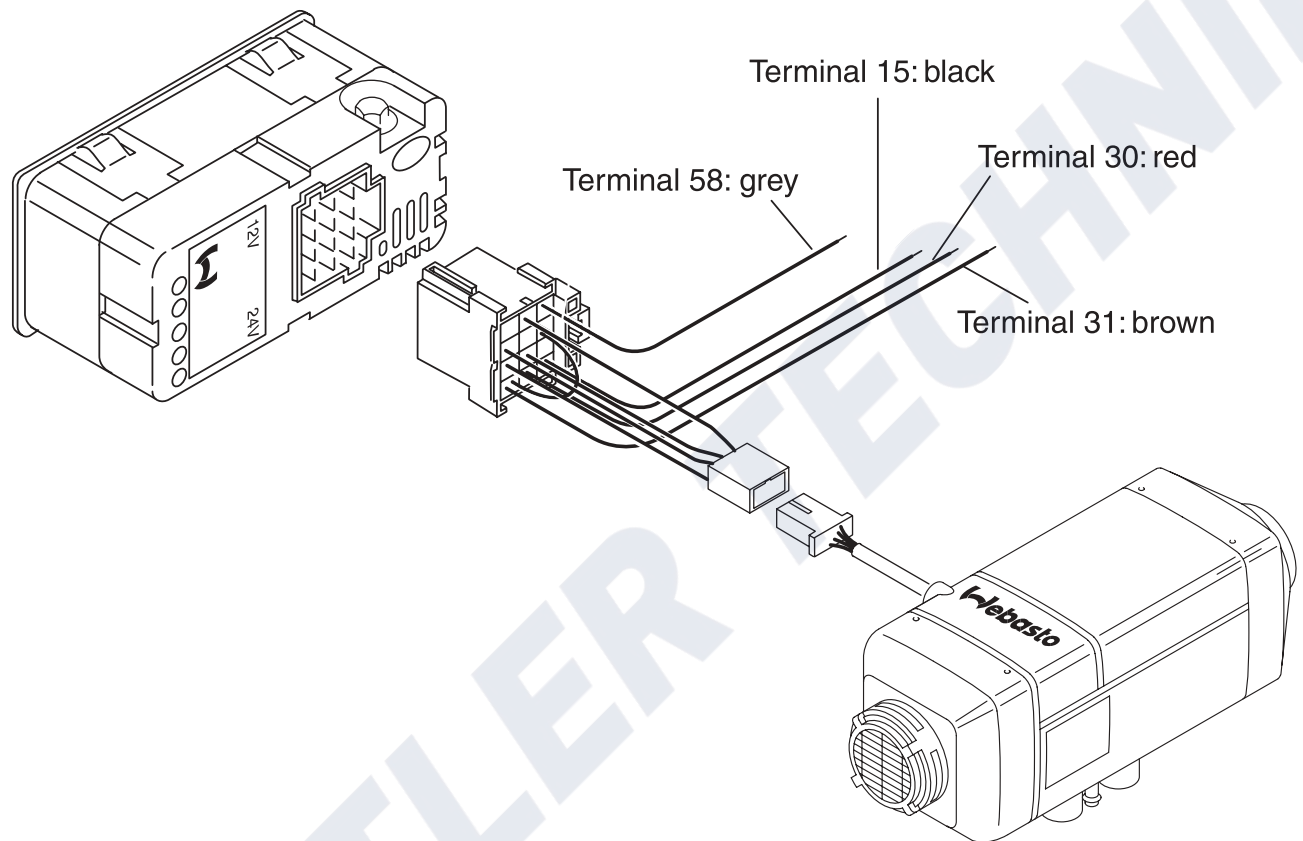


Fig. 707 Schematic connection of the combination timer

BUTLER TECHNIK

8 Servicing work

8.1 General

This section describes the servicing work that can be carried out on the heater when it is installed.

8.2 Work on the heater

Disconnect the main power cable from the vehicle's battery before carrying out any work on the heater. The main battery power must not be disconnected whilst the heater is operating or slowing down as a result of the risk of the heater overheating and the overheating guard thus being tripped. If you wish to carry out extensive repair work on the heater, it may be a good idea to remove it completely.

Refer to the relevant installation instructions and the installation proposal for the heater for the specific vehicle for repairs that necessitate the installation position being changed.

8.3 Work on the vehicle

CAUTION

A temperature of 85 °C must not be exceeded in the vicinity of the heater in any circumstances (for example when completing painting work on the vehicle).

8.4 Heater trial

WARNING

The heater must not be operated in enclosed areas such as garages and workshops without an emissions extraction system, even if you use the timer.

CAUTION

The heater must not be operated without the cover for the control unit as this will cause it to overheat.

8.5 Servicing work

NOTE

The heater should be operated for approximately 10 minutes every 4 weeks to prevent mechanical parts seizing.

The heater requires no servicing. However, it should be checked at regular intervals, at the latest at start of the heating period (the time after which the heater will be used due to adverse weather conditions) by Webasto-trained personnel.

The following servicing work is to be carried out to maintain the functional reliability of the heater:

- Check the hot air inlet and outlet for dirt and foreign bodies. (Dirty or blocked hot air lines may cause overheating.)
- Clean the exterior of the heater (avoid the ingress of water).
- Check the electrical connections for contact corrosion and to ensure that they are secure.
- Check the exhaust and combustion air lines for signs of damage and to ensure that they are clear.
- Replace the fuel filter if there is one.
- Check the fuel line and filter for leaks.

8.6 Visual inspections and installation instructions

8.6.1 Hot air system

CAUTION

The integration of the heater into the vehicle's own air system is not permitted as a result of the high pressure in the vehicle's system.

Inside the control unit there is a temperature sensor, which operates the heater in the appropriate heat output range in conjunction with the control element depending on the intake temperature and the position of the setpoint generator. The heat output is set so that after the selected interior temperature has been reached quickly, it is then kept at this selected value. Alternatively, the heaters can be operated with an external temperature sensor (see 9.1.2).

NOTE

Only materials that can permanently withstand temperatures of at least 130 °C may be used for the hot air line.

Maximum pressure drop between the inlet and outlet side of the hot air line 1.5 hPa (corresponds to 1.5 mbar / 15 mm WC).

If this value is exceeded, the heat output may be reduced as a result of the hot air outlet temperature control.

The internal diameter of the main section of the hot air line should be 60 mm.

When using narrower lines, the permissible pressure drop is exceeded more quickly.

The hot air hose must be secured at its connection points.

The heater can be used on the air inlet and outlet side if it is used in an air circulation system with grates. Do not short circuit the flow of hot air.

CAUTION

In vehicles used to transport people, the air outlet opening is to be installed in such a way that it is at least 20 cm away from all body parts.

The heaters check the internal temperature rise automatically each time they are switched on. If this is above the specified limits, the start is cancelled and error messages F10 is displayed. To ensure that the heater functions stably, the flow resistance of the connected hot air system must be reduced.

If a filter is used for the hot air, it must have the following properties:

- The air flow must not carry any inflammable and/or harmful fibres or particles into the heater or the interior of the vehicle.
- The filter material must be able to withstand temperatures of at least 60 °C.
- The filter must be resistant to all the substances that may be drawn in with the hot air (for example moisture, salt, fuel vapours, etc.).
- The resistance of the filter must be taken into consideration when designing the hot air system.

8.6.2 Fuel supply

The fuel is taken from the vehicle fuel tank or from a separate fuel tank. The values for the maximum pressure at the fuel extraction point are shown in Fig. 801.

Permissible fuel inflow height H (m)	At max. pressure (bar) in fuel line
0.00	0.20
1.00	0.11
2.00	0.03
Maximum fuel intake height S (m)	At max. negative pressure (bar) in fuel tank
0.00	-0.10
0.50	-0.06
1.00	-0.02

8.6.2.1 Fuel extractor**Vehicles with diesel engines**

The fuel must be taken from the vehicle fuel tank or from a separate tank (Fig. 802, 803 or 804). This separate fuel pickup precludes any effect of pressure.

Vehicles with carburettor engines

The fuel may only be extracted on cars using the special Webasto fuel extractor (for example ID no. 470 910), as close to the tank as possible. The connection may be made in either the supply or return line, in which case the return line must lead almost to the base of the tank. If this is not the case, the return line may be extended.

The fuel extractor must be fitted in such a way that any air or gas bubbles are automatically discharged towards the tank.

The fuel extractor should not be located near the engine, as gas bubbles may form in the lines on account of heat radiated from the engine. This may cause problems during combustion.

Vehicles with injection engines

When installing the heater in a vehicle with fuel injection systems, it is important to establish whether the fuel pump is located inside or outside the tank.

If the fuel pump is located inside the tank, fuel can only be extracted from the return line using the Webasto fuel extractor (for example ID no. 470 910), in which case it must be ensured that the return line continues almost to the bottom of the tank. If this is not the case, Webasto fuel extractor (see Fig. 802, 803 or 804) may be used.

If the fuel pump is installed outside the tank, the fuel connection may also be made between the tank and the fuel pump, again using only the Webasto fuel extractor (for example ID no. 470 910).

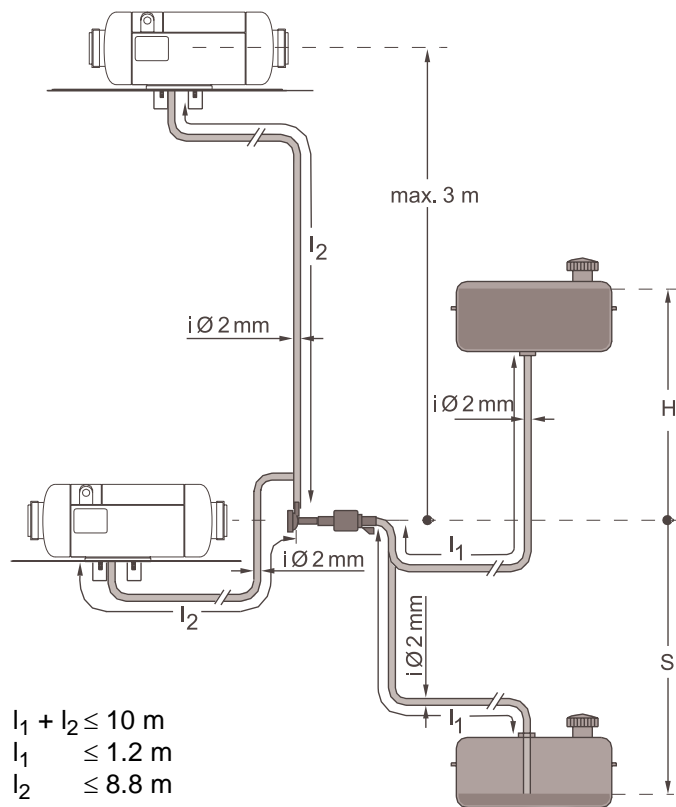
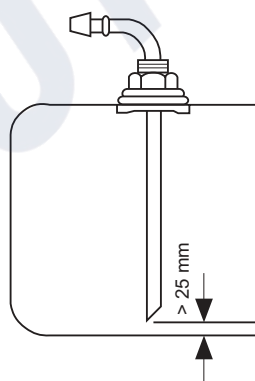


Fig. 801 Fuel supply

Hole pattern

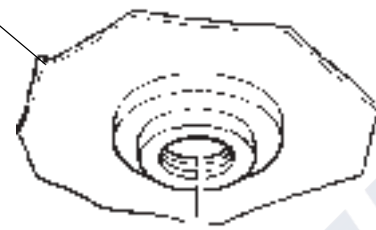


NOTE

Only use a tank extractor with metal fuel tanks.

Fig. 802 Webasto fuel extractor

Plastic tank



Sealing ring

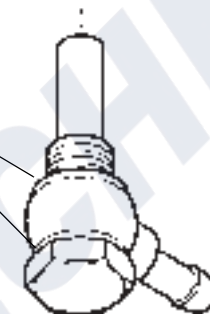
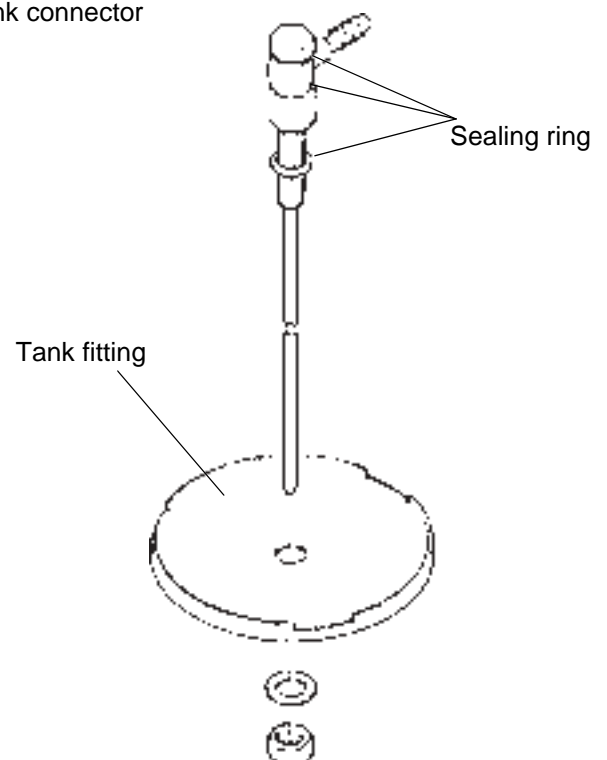


Fig. 803 Fuel extractor from the plastic tank
(extraction through tank drain screw)

Tank connector



NOTE

The fitting must be made of metal.

Fig. 804 Fuel extractor from the plastic tank
(extraction through tank fitting)

8 Servicing work

Air Top 2000 ST

8.6.2.2 Fuel lines

Only steel, copper and plastic lines of plasticised, light and temperature-stabilised PA11 or PA12 (for example Mecanyl RWTL) according to DIN 73378 may be used for the fuel lines. Since the lines cannot normally be routed with a constant rising gradient, the internal diameter must not be allowed to exceed a certain size. Air or gas bubbles will accumulate in lines with an internal diameter of more than 4 mm and these will cause malfunctions if the lines sag or are routed downwards. The diameters specified in Fig. 801 will ensure that bubbles do not form.

The lines should not be routed downwards from the metering pump to the heater.

Unsupported fuel lines must be secured to prevent them sagging. They must be installed in such a way that they cannot be damaged by flying road chippings and **high temperatures** (exhaust line).

The fuel lines must be secure at the connections using hose clips to prevent their slipping.

Connecting two pipes with a hose

The correct procedure for connecting fuel lines with hosing is shown in Fig. 805.

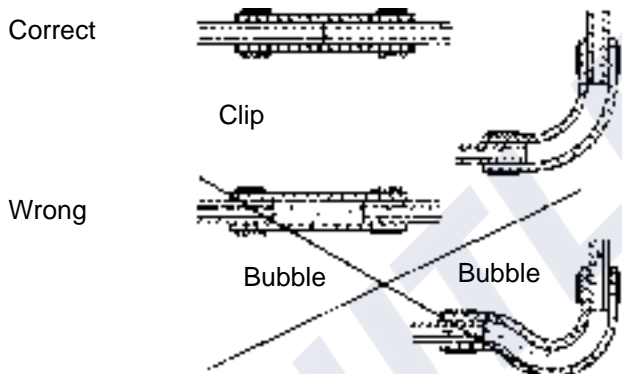
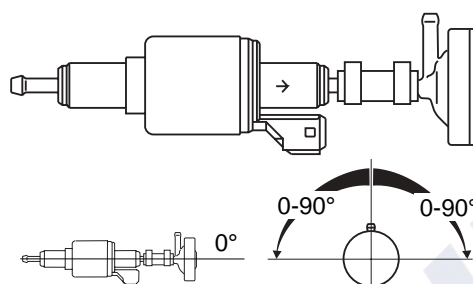


Fig. 805 Pipe/Hose connections

8.6.3 Metering pump

The metering pump is a combined delivery, metering and shut-off system and is subject to certain installation criteria (Fig. 801 and 806).



12 V and 24 V – diesel DP 30
Only horizontal installation position

Fig. 806 Metering pump, installation position and attachment

8.6.3.1 Installation location

It is advisable to install the metering pump in a cool place. The maximum ambient temperature must not exceed +20 °C at any time during operation.

The metering pump and fuel lines must not be installed within range of the radiated heat from hot vehicle parts. A heat shield must be used if necessary.

8.6.3.2 Installation and attachment

The metering pump must be secured with a vibration-damping mounting. Its installation position is limited as shown in Fig. 806 in order to ensure effective automatic bleeding. As a result of the risk of corrosion, only genuine Webasto parts may be used for the plug connections between the metering pump and the metering pump wiring harness.

8.6.4 Fuel filter

Only a Webasto filter, ID no. 487 171, is allowed to be used if the fuel is expected to be contaminated. Install vertically if possible, however at most horizontally (check flow direction).

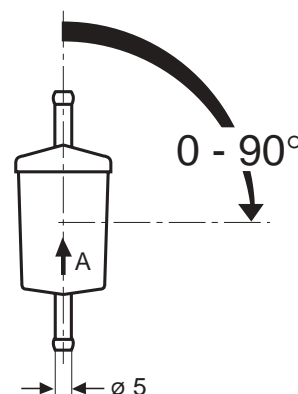


Fig. 807 Fuel filter

8.6.5 Combustion air supply

Under no circumstances may the combustion air be taken from areas occupied by people. The combustion air intake opening must not point in the direction of travel. It must be located so that it cannot become clogged with dirt.

NOTE

The combustion air must be extracted using a combustion air line from a position that is as cool as possible and protected from splashing water for petrol heaters.

If the heater is in a sealed installation box, the combustion air must be drawn in from the outside and the emissions fed to the outside. Pipe passage holes must be made in such a way as to ensure that the ingress of exhaust fumes into the interior of the vehicle should not occur.

If dirty combustion air is expected, a combustion air filter may be fitted (only Air Top 2000 ST D). If the intake hose length is < 0.6 m, an intake silencer must be used.

Length of the combustion air inlet and exhaust lines:

With silencer: max. 2.0 m

Without silencer: max. 5.0 m

Both lines are to be installed falling away from the heater.

If this is not possible, a condensate drain hole with a diameter of 4 mm must be made at its lowest point or a connection element with a condensate drain used.

Internal diameter of the lines:

Combustion air line: 22 mm

Exhaust line: 22 mm

NOTE

If the exhaust line is over 2 m in length, insulated lines must be used (to prevent falling below the dewpoint).

Minimum bending radius: 50 mm

An attachment is required no further than 150 mm from the end of the exhaust pipe to ensure that the angle of $90^\circ \pm 10^\circ$ is achieved.

8.6.6 Exhaust line

Rigid pipes of unalloyed or alloyed steel with a minimum wall thickness of 1.0 mm or flexible piping of alloyed steel only must be used as the exhaust line. The exhaust pipe must be secured to the heater and exhaust silencer with a pipe clip, ID no. 20965A.

The exhaust silencer (Fig. 808) should ideally be installed near the heater. The flow direction is arbitrary.

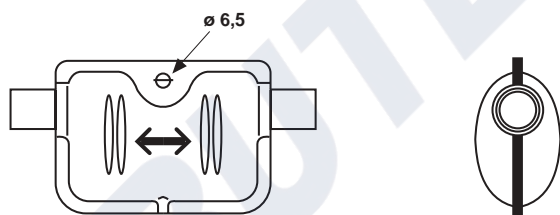


Fig. 808 Exhaust silencer

The heater may also be operated without a silencer.

8.6.7 Combustion air inlet and exhaust lines

To prevent damaging the metering pump cable, exhaust line must not be used to extend the combustion air supply line.

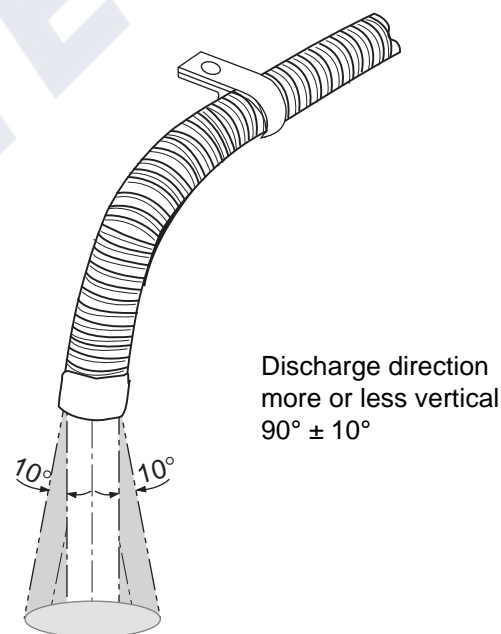


Fig. 809 Exhaust pipe mouth, installation position

WARNING

If the exhaust pipe mouth is positioned other than as shown in Fig. 809, it will pose a fire risk.

Total bends:

Combustion air line: max. 270°

Exhaust line: max. 270°

8 Servicing work

Air Top 2000 ST

8.6.8 Electrical connections

8.6.8.1 Heater connection, control element

The electrical connection is to be made as shown in the appropriate circuit diagram (see section 7).

To connect the wiring harness, remove the cover (see 9.2.1.1) on the heater and connect the wiring harness plug to the control unit.

Before using the heater for the first time fit the cover to prevent the illegal escape of hot air (heater overheating).

The wiring harness can be fed out of the left or right side of the heater.

8.6.8.2 Supply voltage connection

Ideally from the vehicle's central electrical system.

An additional blade terminal fuse holder is to be fitted to protect the heater (supplied with the heater). The fuse holder may only be installed in the interior of the vehicle.

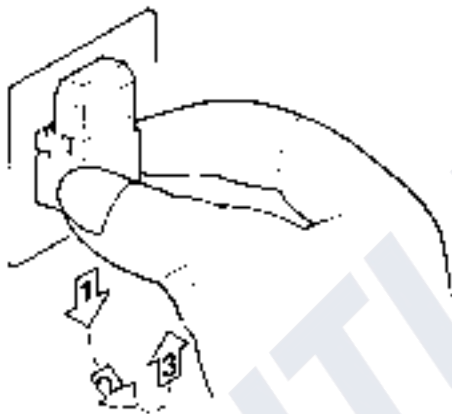


Fig. 810 Remove the fastening plate on the fuse holder

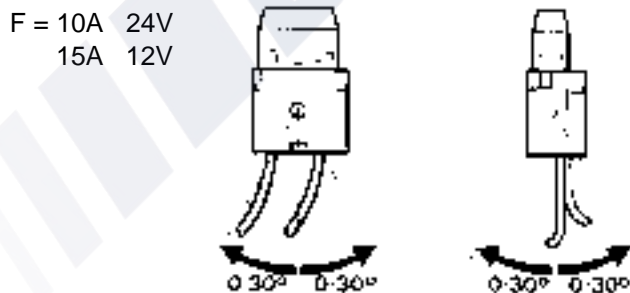


Fig. 811 Fuse holder, installation position

8.6.8.3 Control element connection

The wiring harness is prepared for connection to the control element (adjuster).

Simply pull on connector housing to disconnect the connector (Fig. 813).

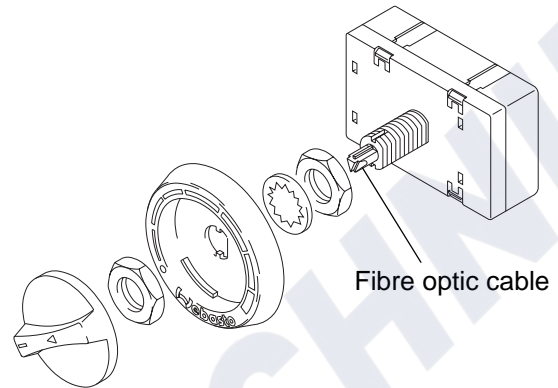


Fig. 812 Control element

NOTE

The fibre optic cable must be in contact with the rotary knob.

NOTE

The connector housing can be locked (self-locking action) by simply pulling on the wiring harness.

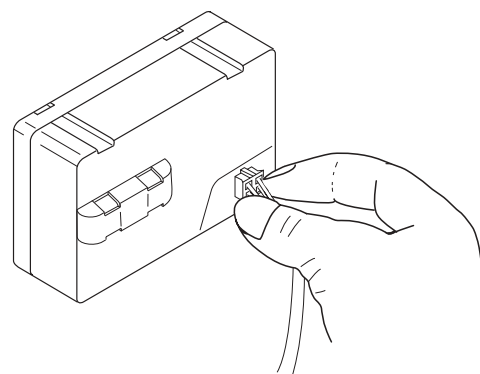
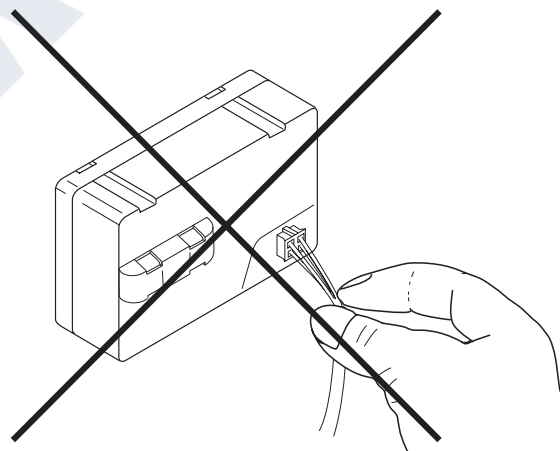
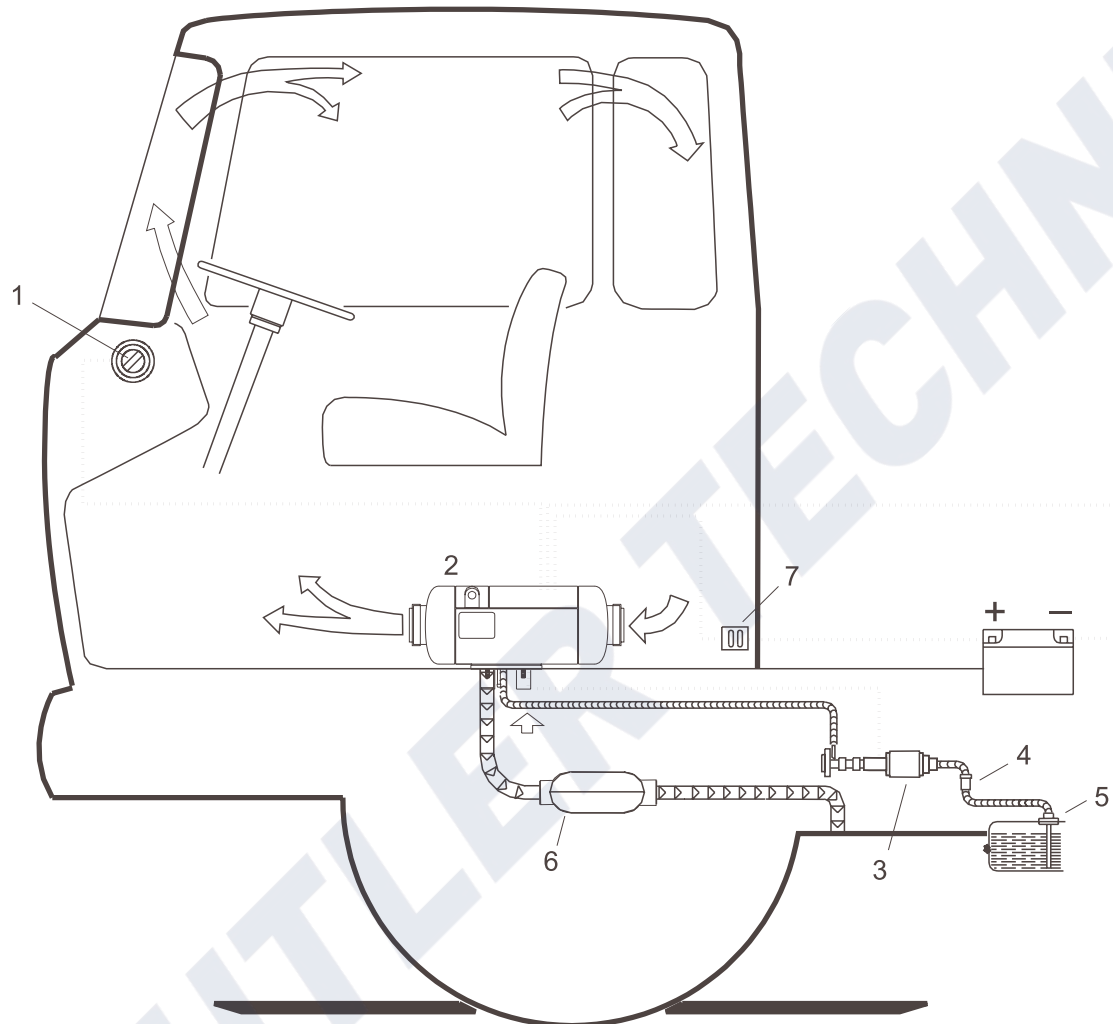


Fig. 813 Disconnect the plug



- 1 Control element
- 2 Heater
- 3 Metering pump and damper
- 4 Fuel filter (accessory)
- 5 Tank connector
- 6 Exhaust silencer
- 7 Fuse

Fig. 814 Specimen installation for heater in an air circulation system

8 Servicing work

Air Top 2000 ST

8.7 Removal and installation

CAUTION

When the heater is installed it must not be dismantled.

8.7.1 Heater, removal and installation

8.7.1.1 Removal

1. Disconnect the battery.
2. Pull the cover off the top shell as described in 9.2.1.1.
3. Disconnect the wiring harness plug from the control unit.
4. Disconnect the cable to the metering pump at the disconnection point.
5. If necessary disconnect the hot air hose or hoses.
6. Disconnect the connection for the combustion air inlet on the heater.
7. Disconnect the connections for the combustion air inlet and exhaust outlet on the heater.
8. Remove four nuts and locking washers from the heater.
9. Remove the heater and discard the seal on the exhaust outlet.

8.7.1.2 Installation

1. Place the heater with a **new** seal on the exhaust outlet in the installation position and secure it with 4 nuts and locking washers (use only genuine Webasto nuts).
2. Tighten the nuts to 6 + 1 Nm.
3. Secure the connection for the combustion air inlet on the heater.
4. Secure the connections for the combustion air inlet and exhaust outlet on the heater.
5. Connect the metering pump cable to the metering pump wiring harness.
6. Connect the wiring harness plug to socket X6 of the control unit.
7. Fit the cover and secure it.
8. If necessary fit the hot air hose or hoses and secure them.
9. Connect the battery.
10. Bleed the fuel supply system (see 8.8).

8.8 Start-up

After you have installed the heater, bleed the fuel supply system carefully.

NOTE

As a result of the low fuel consumption the heater must be switched on several times to fill the fuel line.

Conduct a trial of the heater to check all the connections for leaks and to ensure that they are secure. If the heater suffers a fault during operation, the fault must be located and remedied.

9 Repair

9.1 General

This section describes the repair work that may be carried out on the Air Top 2000 ST heater after it has been removed from the vehicle. Any further dismantling will invalidate the warranty. Only use the spare parts from the appropriate spare parts kits for assembling the heater.

9.1.1 Work on stripped-down components

CAUTION

All sealing elements between the stripped-down components and the seal on the exhaust outlet must always be discarded and replaced.

9.1.1.1 Cleaning

- Clean all stripped-down components with benzene and then dry them with compressed air.
- Remove all seal residue on the components carefully using a suitable tool.

9.1.1.2 Visual inspection

- Check all components for damage (cracks, deformation, wear, etc.) and fit new ones if necessary.
- Inspect the plugs and cables for corrosion, loose contacts, crimping faults, etc. and repair them if necessary.
- Check plug strips for signs of corrosion and contacts to ensure they are secure. Repair them if necessary.

9.1.2 Carrying out modifications

NOTE

The constant development of our heaters is aimed at optimising them so as to prevent failures and malfunctions.

Generally it is possible to modify heaters that are already in use. We can supply the appropriate modification kits for this purpose.

The following describes modifications that can be carried out without any great effort during standard repair work:

- Installation of an external temperature sensor for better temperature control (see 9.1.2.1).

9.1.2.1 Installation of an external temperature sensor

General

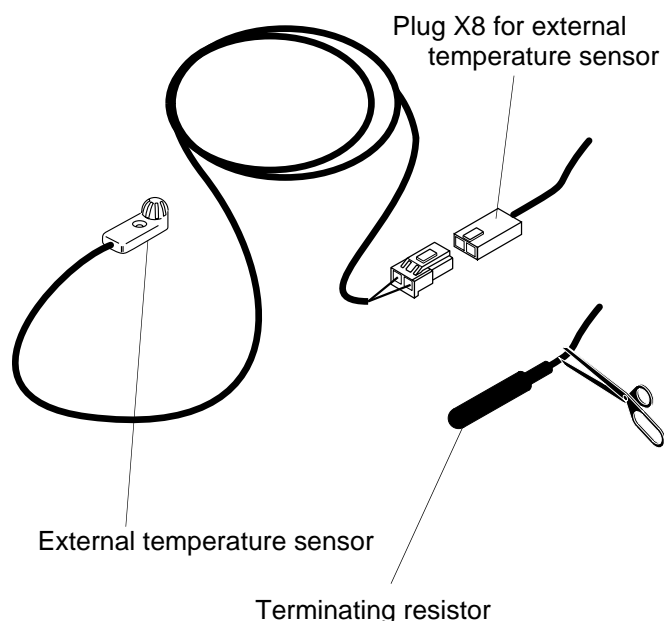
The heater can control the required temperature perfectly if its temperature sensor is exposed to the air temperature of the main area of the vehicle. In certain circumstances, this is not always possible using the temperature sensor integrated in the control unit due to the installation circumstances (addition of fresh air). In this case perfect temperature control can be ensured using an external temperature sensor fitted in the appropriate area.

Method

1. Select a suitable position for an external temperature sensor.

NOTE

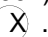
- The temperature sensor should not be in the direct line of hot air and not close to heat sources (for example the vehicle's own heating system).
 - The sensor is to be installed at medium height in the vehicle cabin on surfaces that are as vertical as possible.
 - The installation site should not be exposed to direct sunlight.
 - Do not install the temperature sensor behind curtains or the like.
2. Install the external temperature sensor and route the cable to the control element.
 3. Cut off the terminating resistor connection at the wiring harness.
 4. Crimp on the plug X8 for the external temperature sensor at the end of the cable.
 5. Connect the plug of the external temperature sensor at plug X8 of the wiring harness.
 6. Conduct a trial and check the control properties.



9.2 Dismantling and assembling

9.2.1 Remove the casing parts

9.2.1.1 Cover for electrical connection

The cover (1, Fig. 901) can be levered off using a blunt blade in the areas .

9.2.1.2 Grates for hot air inlet and outlet

The grates (5) can be released from the mounting by twisting and pulling off forwards.

9.2.1.3 Cover for hot air inlet and outlet

Both covers (3 and 6, Fig. 901) can be released from their mountings and removed by pressing the four detents at the top and bottom using a suitable tool.


9.2.1.4 Top shell

NOTE

The covers for the hot air inlet and outlet must have been removed.

The shell (2, Fig. 901) can be raised by pulling up.

9.2.1.5 Bottom shell

By gently pulling the bottom shell (4, Fig. 901) on both sides in the areas , you can release the fixing and the shell can be taken off the motor casing.

9.2.2 Fit the casing parts

9.2.2.1 Bottom shell

IMPORTANT

To ensure that the heater and the overheating sensor work perfectly, please note the following when fitting the casing:

- Four insulators are used as spacers between the heat exchanger and the casing parts.
- Slide the four insulators (8, Fig. 901) onto the four corner ribs of the heat exchanger and position exactly next to the rib extension.
- Check that all four insulators (8, Fig. 901) are securely positioned.

CAUTION

When you fit the bottom shell (4, Fig. 901), spread it slightly so that the spacers on the overheating sensor (8, Fig. 902) are not damaged.

1. Expand the bottom shell (4, Fig. 901) slightly at the side and fit it to the heater from underneath until the securing pins on the heater engage in the holes in the shell.
2. Fit a new seal on the exhaust outlet.

9.2.2.2 Top shell

1. Place the top shell (2, Fig. 901) on the heater and secure it in the grooves in the bottom shell.

9.2.2.3 Cover for hot air inlet and outlet

NOTE

The covers for the hot air inlet and outlet are different. Fit the cover with the smaller opening at the front on the hot air blower.

1. Push on the covers (3 and 6, Fig. 901) until the four securing holes engage properly in the detents on the bottom and top covers.

9.2.2.4 Grates for hot air inlet and outlet

1. Fit the grates (5, Fig. 901) on the covers for the hot air inlet and outlet and twist them to secure them.

9.2.2.5 Cover for electrical connection

NOTE

The wiring harness is to be taken out of the left or right of the heater to suit the installation situation.

1. Fit the cover (1, Fig. 901) until it audibly engages in the top cover.

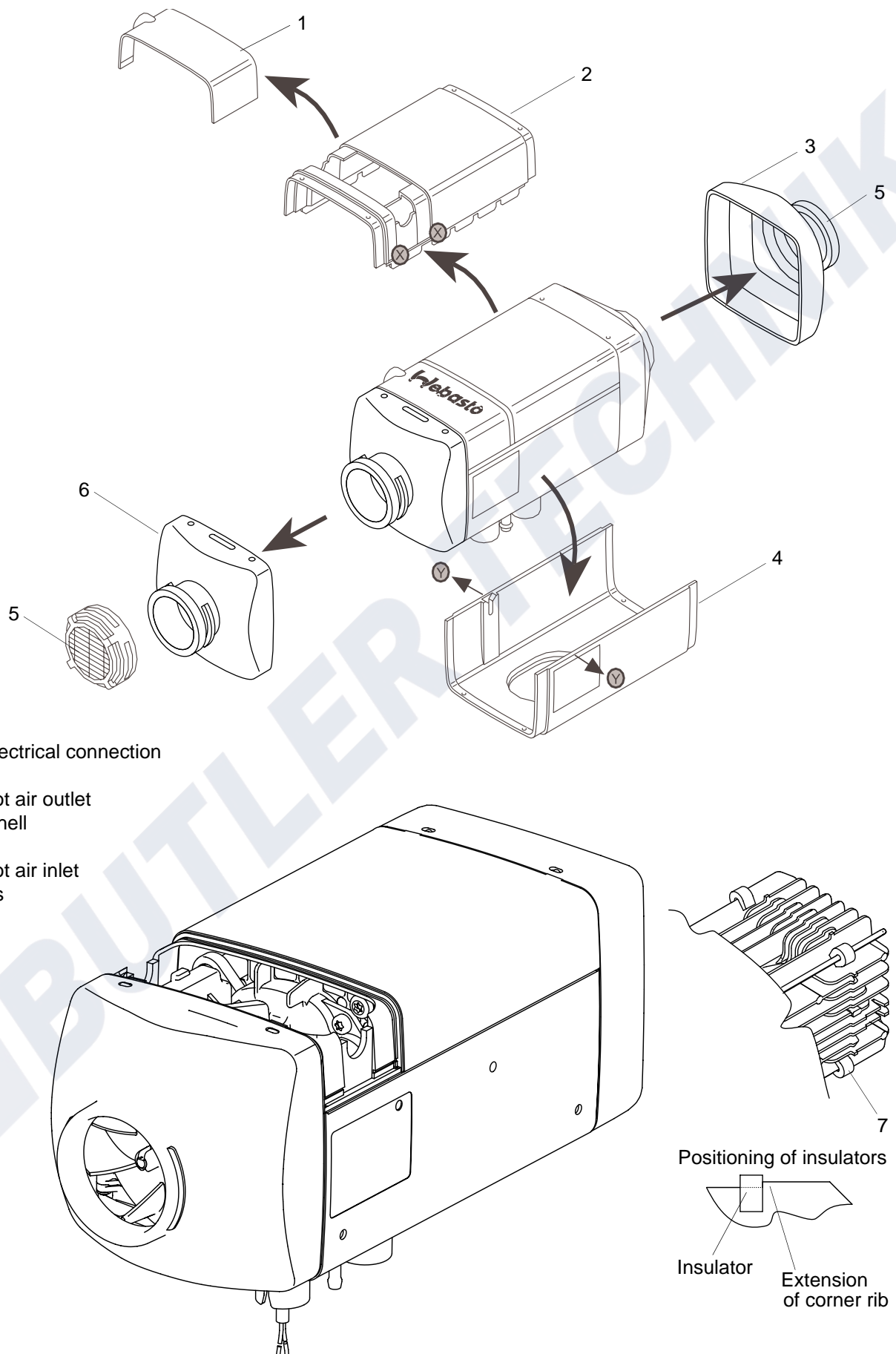


Fig. 901 Remove / Fit the casing parts

9 Repair

Air Top 2000 ST

9.2.3 Change the control unit

9.2.3.1 Removal

1. Remove the heater (see 8.7.1.1).
2. Remove the casing parts (see 9.2.1).
3. Open the catches on the hot air blower.
4. Pull the hot air blower (1, Fig. 902) off the motor shaft by hand.
5. Disconnect the plug connectors on the control unit (3).
6. Remove screws (2) and the control unit (3).
7. Complete the work on stripped-down components (see 9.1.1).

NOTE

Do not carry out any repair work to the control unit.

9.2.3.2 Installation

1. Place the control unit (3, Fig. 902) in the installation position and attach with screws (2).
2. Tighten the screws to 0.7 ± 0.07 Nm.
3. Slide the hot air blower (1) onto the motor shaft until the detent on both sides is heard to engage in the shaft groove at the stop.
4. Connect the plug connectors at the sockets of the control unit (3) as shown in Fig. 701.
5. Position the casing parts (see 9.2.2).
6. Install the heater (see 8.7.1.2).
7. Check the CO₂ setting and adjust it if necessary (see 6.2).
8. Check that the hot air blower moves easily with your hand. Check for any noise when you switch it on later. The sensor magnets on the hot air blower must be clear of ferrous chips, etc.

9.2.4 Change the overheating sensor

9.2.4.1 Removal

1. Remove the heater (see 8.7.1.1).
2. Remove the casing parts (see 9.2.1).
3. Remove the insulators (9, Fig. 902).
4. Disconnect the plug connector X5 on the control unit (3).

CAUTION

Do not pull the cables.

5. Lever the overheating sensor (8) out of the ribs of the heat exchanger (7) using a suitable tool (see detail A).
6. Remove the overheating sensor (8).

9.2.4.2 Installation

1. Measure the resistance of the overheating sensor (8, Fig. 902) (see 6.3.3).
2. Position the overheating sensor (8, Fig. 902) on the heat exchanger (7) and press it into place by hand.

IMPORTANT

There must not be an electrical connection between the sensor cables and the sheet metal holder.

3. Ensure that the overheating sensor is correctly positioned in the heat exchanger (7).
4. Connect the plug connector X5 at the control unit (3). Check that the cables are routed in parallel between the ribs on the heat exchanger.
5. Push the insulators (9) on to the heat exchanger.
6. Position the casing parts (see 9.2.2).
7. Install the heater (see 8.7.1.2).

9.2.5 Change the combustion air fan**9.2.5.1 Removal**

1. Remove the heater (see 8.7.1.1).
2. Remove the casing parts (see 9.2.1).
3. Remove the control unit (see 9.2.3.1).

NOTE

A total of 9 screw heads are visible on the combustion air fan (5, Fig. 902). Of these the 5 outer screws are used to attach the combustion air fan to the heat exchanger (7). Only these screws should be removed.

4. Remove the screws (4).
5. Remove the combustion air fan (5) from the heat exchanger (7), remove the seal (6) and dispose of it separately.
6. Complete the work on stripped-down components (see 9.1.1).

9.2.5.2 Installation

1. Ensure that the sealing surfaces on the combustion fan (5, Fig. 902) and on the heat exchanger (8) are not damaged.
2. Fit a new seal (7) on the flange of the combustion air fan (5).
3. Bring the combustion air fan (5) into the assembly position and secure with screws (4), attaching the electrical bonding of the wiring harness to the motor at the same time.
4. Tighten the screws (4) to 6 ± 0.6 Nm.
5. Fit the control unit (see 9.2.3.2).
6. Position the casing parts (see 9.2.2).
7. Install the heater (see 8.7.1.2).
8. Check the CO₂ setting and adjust it if necessary. (see 6.2).

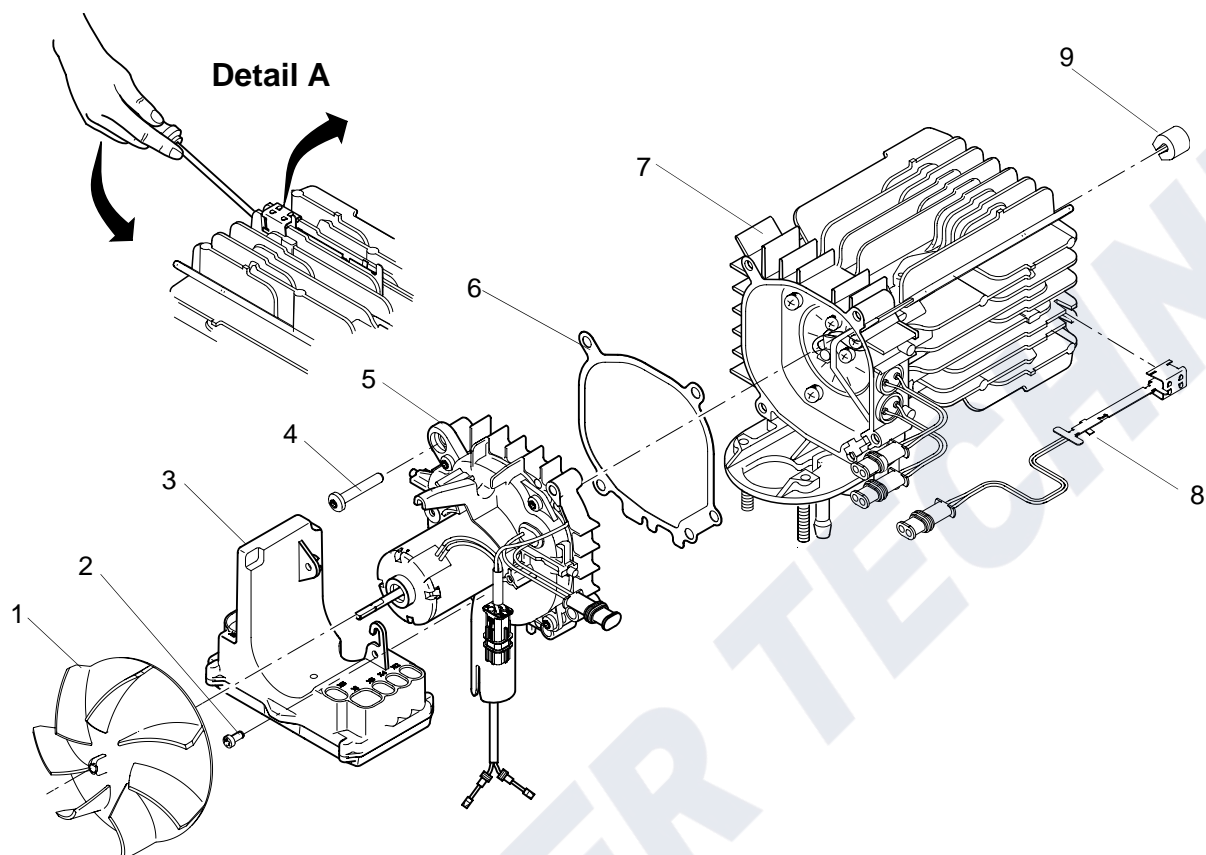
9.2.6 Change the flame sensor (only petrol heater)**9.2.6.1 Removal**

1. Remove the heater (see 8.7.1.1).
2. Remove the casing parts (see 9.2.1).
3. Remove the control unit (see 9.2.3.1).
4. Remove the combustion air fan (see 9.2.5.1).
5. Remove two screws (2, Fig. 903) and take off the air baffle (3).
6. Press the cable grommet (11) on the flame sensor connecting cable inwards out of the heat exchanger (9).
7. Carefully bend up the securing strap (4) and pull out the flame sensor (1) from the burner insert.
8. Remove flame sensor
9. Complete the work on stripped-down components (see 9.1.1).

9.2.6.2 Installation**CAUTION**

Install the flame sensor cable under the fuel line.

1. Slide the flame sensor (1, Fig. 903) through under the fuel line, insert the plug through the hole in the heat exchanger (9) and press the cable grommet (11) into the heat exchanger (9) from inside.
2. Insert the cable with the protective sheath through the securing strap (4) and insert the flame monitor (1) into the burner insert (5).
3. Press the securing strap (4) back together.
4. Secure the air baffle (3) with screws (2).
5. Tighten the screws (2) to 6 ± 0.6 Nm.
6. Pull the cable of the flame sensor tight.
7. Install the combustion air fan (see 9.2.5.2).
8. Fit the control unit (see 9.2.3.2).
9. Position the casing parts (see 9.2.2).
10. Install the heater (see 8.7.1.2).



- 1 Hot air blower
- 2 Torx screw (3)
- 3 Control unit
- 4 Torx screw (5)
- 5 Combustion air fan (drive unit)
- 6 Seal
- 7 Heat exchanger
- 8 Overheating sensor
- 9 Insulator (4)

Fig. 902 Change the control unit, combustion air fan and overheating sensor

9.2.7 Change the glow plug

9.2.7.1 Removal

1. Remove the heater (see 8.7.1.1).
2. Remove the casing parts (see 9.2.1).
3. Remove the control unit (see 9.2.3.1).
4. Remove the combustion air fan (see 9.2.5.1).
5. Press the cable grommet (10, Fig. 903) inwards out of the heat exchanger (9).
6. Remove four screws (2) and take off the air baffle (3).

NOTE

Check that the burner insert (5) is detached from the combustion pipe (13).

7. Carefully remove the burner insert (5) by tilting.

CAUTION

The glow plug should be removed with extreme care and must not be twisted under any circumstances (risk of breakage). After lengthy operation of the burner the glow plug may be fixed in place by fuel deposits. In this case apply penetrating oil and allow to work until the glow plug can be removed.

8. Release the screw(7), pull out the glow plug (6) from the burner insert and remove.
9. Remove the combustion pipe (13) and seal (12) from the heat exchanger (9) and dispose of the seal separately.
10. Complete the work on stripped-down components (see 9.1.1).

9.2.7.2 Installation

1. Fit a new seal (12, Fig. 903) into the heat exchanger (9) and bring the combustion pipe (13) into the assembly position.
2. Check that the starting air hole in the burner insert (5) is free.
If necessary, clean with a wire, approx. 4 mm Ø (see Fig. 904).

CAUTION

When installing the glow plug, make sure that the contacts point to the heat exchanger. Otherwise there is a risk of short-circuiting.

3. Introduce the glow plug (6) in the burner insert (5) and position the protective sheath in the slit of the burner insert.

CAUTION

In the following procedure make sure that the glow plug is placed in the burner insert up to the stop.

4. Secure the glow plug (6) with the screw (7). Tighten the screw (7) to 0.5 Nm.
5. Introduce the burner insert (5) in the heat exchanger (9). Make sure that the cable of the flame sensor (1) (only present with petrol heater) is positioned under the fuel line.
6. Guide the plug of the glow plug and the flame sensor through the holes and press the cable grommets (10) into the heat exchanger.

CAUTION

In the following procedure make sure that the grommet (8) seals off tight with the heat exchanger (9).

7. Secure the burner insert (5) and the air baffle (3) with screws (2). Tighten the screws (2) to 6 ± 0.6 Nm.
8. Install the combustion air fan (see 9.2.5.2).
9. Fit the control unit (see 9.2.3.2).
10. Position the casing parts (see 9.2.2).
11. Install the heater (see 8.7.1.2).

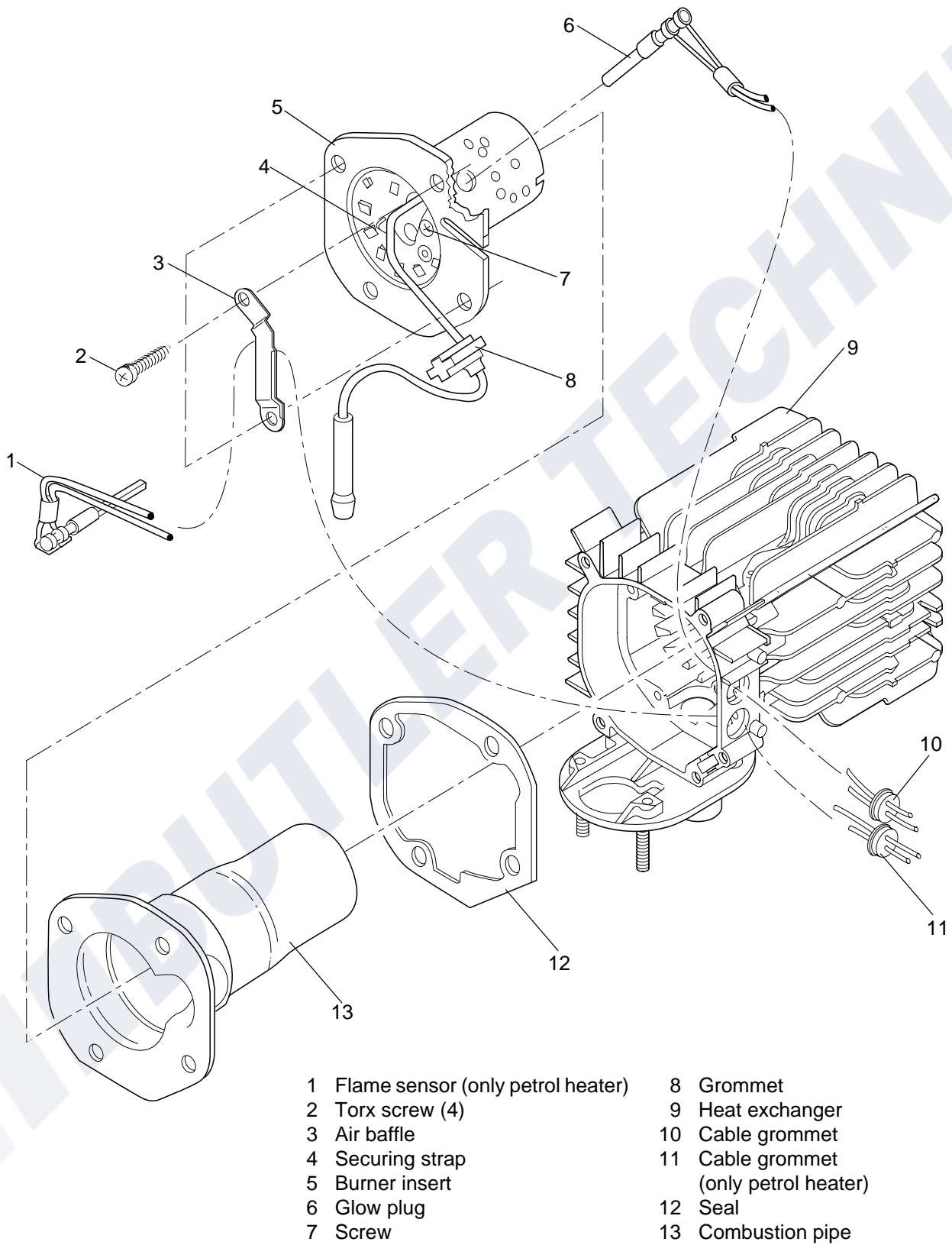


Fig. 903 Change the glow plug, flame sensor, combustion insert and the heat exchanger

9.2.8 Change the burner insert, combustion pipe and the heat exchanger

9.2.8.1 Removal

1. Remove the heater (see 8.7.1.1).
2. Remove the casing parts (see 9.2.1).
3. Remove the control unit (see 9.2.3.1).
4. Remove the overheating sensor (see 9.2.4.1).
5. Remove the combustion air fan (see 9.2.5.1).
6. Remove the flame sensor (only petrol heater) (see 9.2.6.1).
7. Remove the glow plug (see 9.2.7.1).

CAUTION

In the following procedure make sure that the fuel connection is not bent.

8. Remove the burner insert (5, Fig. 903).
9. Remove the combustion pipe (13) and seal (12) from the heat exchanger (9) and dispose of the seal (12) separately.
10. Complete the work on stripped-down components (see 9.1.1).

9.2.8.2 Installation

1. Fit a new seal (12, Fig. 903) into the heat exchanger (9) and bring the combustion pipe (13) into the assembly position.

NOTE

The burner insert (5) is only fixed in place when installing the flame sensor and glow plug.

2. Fit the glow plug (see 9.2.7.2).
3. Fit the flame sensor (only petrol heater) (see 9.2.6.2).

CAUTION

In the following procedure make sure that the fuel connection is not bent.

4. Introduce the burner insert (5) in the heat exchanger (9). Make sure that the cable of the flame sensor is positioned under the fuel line.
5. Secure the burner insert (5) and the air baffle (3) with screws (2).
6. Tighten the screws (2) to $6 \pm 0.6 \text{ Nm}$.
7. Install the combustion air fan (see 9.2.5.2).
8. Fit the control unit (see 9.2.3.2).
9. Fit the overheating sensor (see 9.2.4.2).
10. Fit the insulators (11).
11. Position the casing parts (see 9.2.2).
12. Install the heater (see 8.7.1.2).

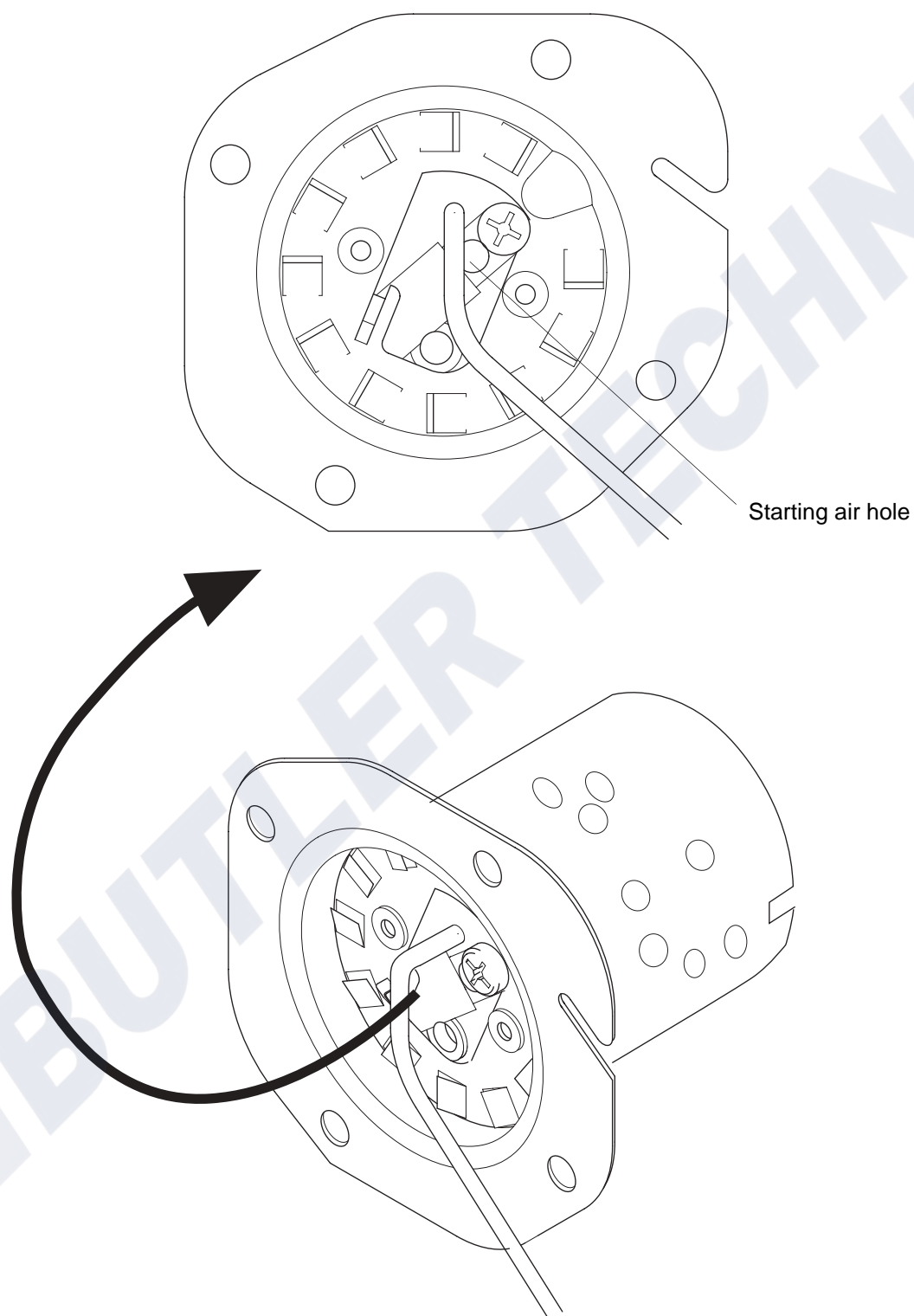


Fig. 904 Starting air hole in burner insert

10 Packaging/Storage/Shipping

10.1 General

If the heater or its components are sent to Webasto Thermosysteme GmbH for testing or repair, it must be cleaned and packed in such a way that it is protected against damage during handling, transport and storage.

An ambient temperature of +85 °C or -40 °C must not be exceeded for storage.

Shipment address:

Webasto AG
Abt. QGN
Speicherstraße 3/4
D-17033 Neubrandenburg

BUTLER TECHNIK